

ALZHEIMER'S DISEASE AND BRAIN HEALTH

Fact Sheet

Among the 5 million
Americans diagnosed with
Alzheimer's, **TWO THIRDS**
are women.

[Alzheimer's Association]

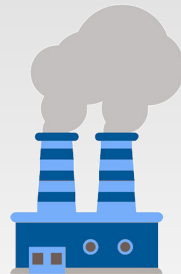


A traumatic **BRAIN INJURY** is most
likely to result in death when it
affects a person over the age of 65.

[CDC]

Exposure to **AIR POLLUTION** has
been linked to an increased risk of
Alzheimer's and related dementia.

[USC]



RESOURCES

USC Emotion and Cognition Lab

The USC Emotion and Cognition Lab, led by Professor Mara Mather, studies the cognitive neuroscience of emotion, decision making and memory during aging. www.matherlab.com

USC AirPollBrain Group

The USC AirPollBrain Group, led by Professor Caleb Finch, is an interdisciplinary group of researchers studying the effects of air pollution on brain health, including the links between pollution and dementia. envneurosci.usc.edu/APB

USC Alzheimer's Disease Research Center

The USC Alzheimer's Disease Research Center, founded by Professor Caleb Finch, reaches out to the multi-ethnic communities in the greater Los Angeles area to study cognitive changes related to aging, Alzheimer's disease and cardiovascular disease. adrc.usc.edu

EXPERTS



Caleb Finch, PhD

Alzheimer's disease, biological causes of aging, molecular neurogerontology, neurochemistry, neuroendocrinology

cefinch@usc.edu



Christian Pike, PhD

Alzheimer's disease and gender, brain aging, hormone therapy, estrogen, progesterone and women's health, testosterone and men's health

cjpike@usc.edu



Elizabeth Zelinski, PhD

Technology and aging, neuroscience, cognition, memory, brain training, language

zelinski@usc.edu



Mara Mather, PhD

Brain aging and cognition, emotion's effects on memory, stress and memory

mara.mather@usc.edu



John Walsh, PhD

Biology of Parkinson's disease, neurophysiology, attention deficit hyperactivity disorder and its chemistry

jwalsh@usc.edu



Andrei Irimia, PhD

Neuroimaging, effects of brain trauma and injury, connectomics (the mapping and study of connections in the brain)

irimia@usc.edu