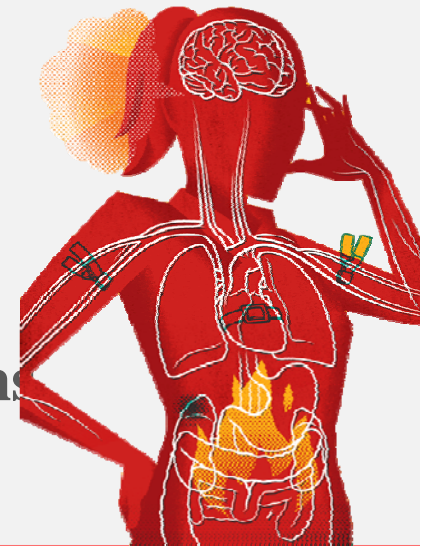
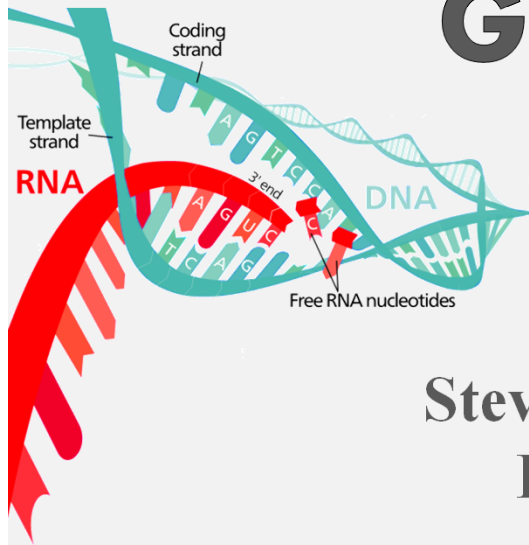


# Childhood & Later Life Stressors & Increased Inflammatory Gene Expression in Old Age

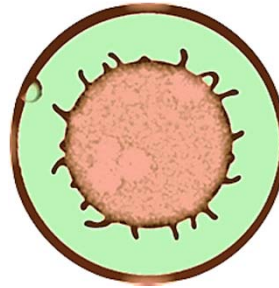


Morgan Levine  
Steve Cole, David Weir, Eileen Crimmins  
Biomarker Network Meeting 2014

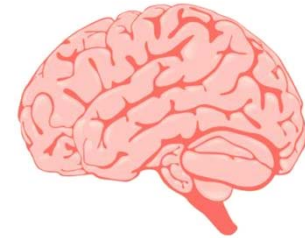
# BACKGROUND



**Adverse life experiences are linked to poorer health and an increased risk of death and disease.**



**Stress has been shown to elicit increases in circulating levels of pro-inflammatory cytokines.**



**Stress during “critical periods” may sensitive the brain to be hyper-responsive to subsequent adversities**

## However...

- **It is often difficult to disentangle the influences of adversity in childhood vs. adulthood.**
- **We don't know whether these differences persist into old age.**

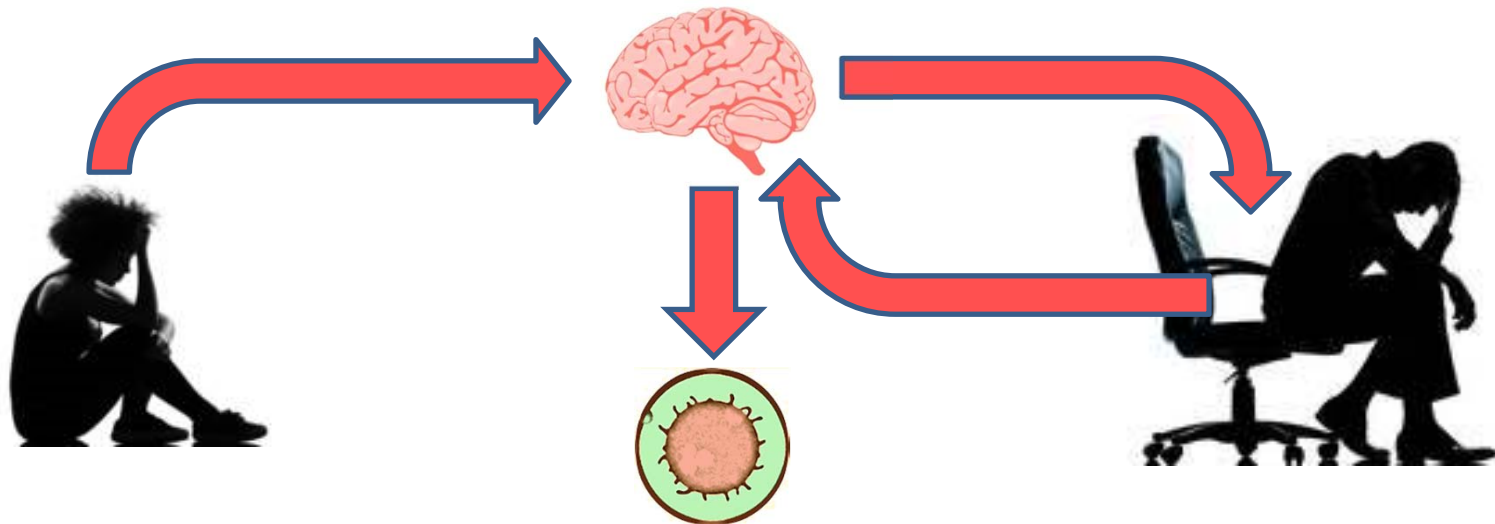
# AIMS

Examine the associations between stressors experienced in childhood and adulthood, and the quantitative expression level of three cardinal pro-inflammatory genes:

- *COX2*, also known as prostaglandin-endoperoxide synthase 2, *PTGS2*
- *IL1B*
- *IL8*

We hypothesize that:

- Childhood exposure to adversity will be associated with more pronounced increase in inflammatory gene expression than later life exposures.
- Early life adversity will sensitize inflammatory gene expression to the effects of stress encountered later in life.



# DATA

## HRS Pilot Sample, 2010

- Randomly selected sample of N=122 participants who had participated in the interview in 2006 or 2008
- Blood samples collected into PAXgene RNA tubes.
- Six mRNA species were assayed by quantitative RT-PCR, including *IL1B*, *IL8*, *PTGS2* and a housekeeping / normalization marker—*ACTB*.
- A composite RNA score was calculated as the mean between *IL1B*, *IL8*, *PTGS2* after subtracting *ACTB* from each.
- Five adversity variables.
  1. Childhood SES
  2. Childhood Trauma
  3. Childhood Health
  4. Adulthood SES
  5. Adulthood Trauma

# SAMPLE

## Sample Characteristics (N=114)

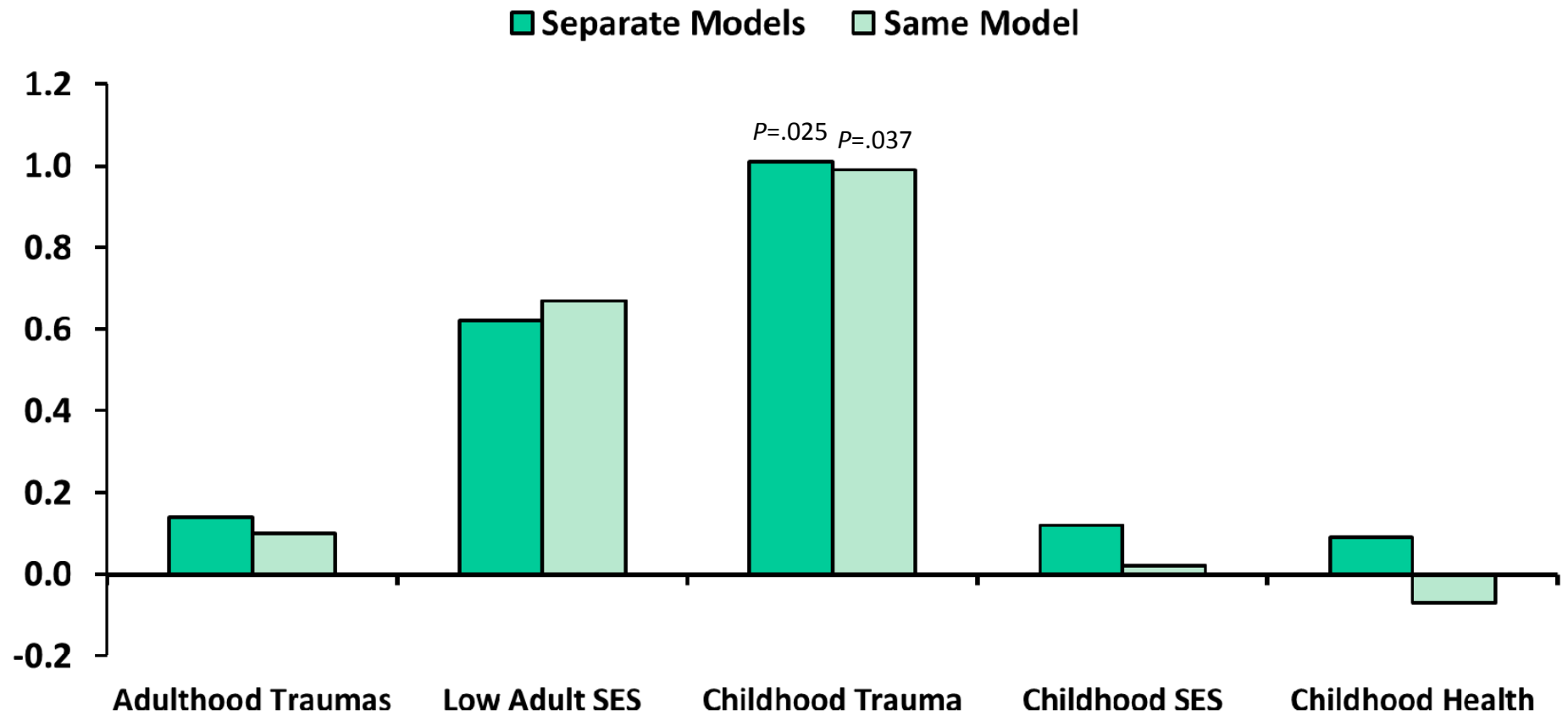
| Characteristics                         | Values       |
|---|--------------|
| Age (years), mean (sd)                  | 73.22 (9.55) |
| Sex (Female=1), (%)                     | 55.26%       |
| Race (White=1), (%)                     | 92.16%       |
| Former Smoker, (%)                      | 54.39%       |
| Current Smoker, (%)                     | 10.53%       |
| Obesity, (%)                            | 29.82%       |
| Drinks per Day, mean (sd)               | 2.12 (4.51)  |
| Childhood Trauma, mean (sd)             | 0.19 (0.44)  |
| Childhood SES, mean (sd)                | 1.57 (1.35)  |
| Childhood Health Conditions, mean (sd)  | 0.29 (0.62)  |
| Adulthood Traumas (count), mean (sd)    | 1.21 (1.08)  |
| Low Adult SES, (%)                      | 7.02%        |
| Centered RNA Composite Score, mean (sd) | 0 (1.97)     |

# RESULTS

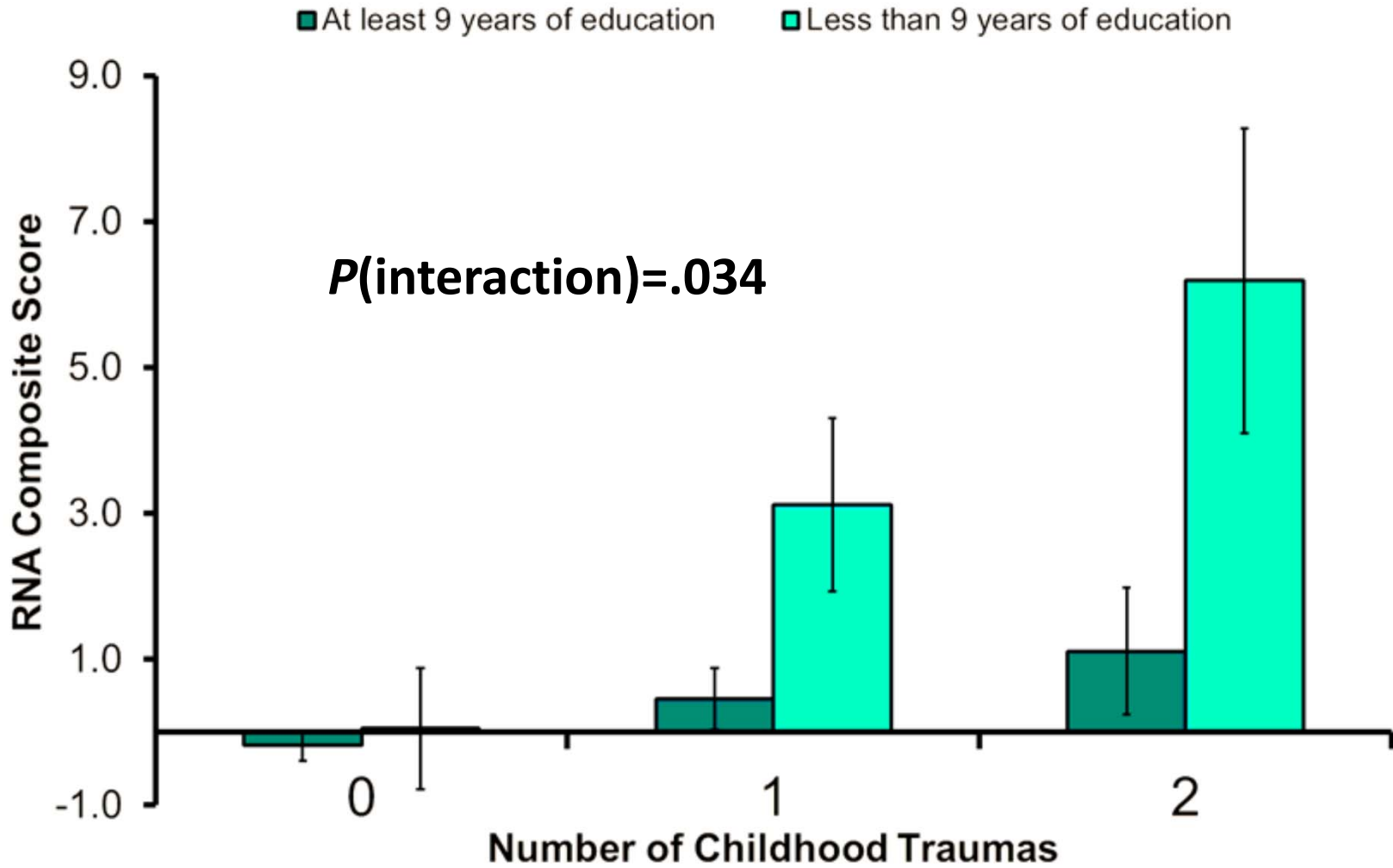
## Pearson Correlations Between Childhood and Adulthood Adversity

|                             | Adulthood Traumas | Low Adult SES | Childhood Trauma | Childhood SES |
|-----------------------------|-------------------|---------------|------------------|---------------|
| Adulthood Traumas           |                   |               |                  |               |
| Low Adult SES               | -0.054            |               |                  |               |
| Childhood Trauma            | 0.156             | 0.036         |                  |               |
| Childhood SES               | 0.183             | 0.369         | 0.141            |               |
| Childhood Health Conditions | 0.040             | -0.073        | 0.183            | 0.076         |

# RESULTS



# RESULTS





# CONCLUSIONS

**Childhood exposure to traumatic events is associated with elevated expression of pro-inflammatory genes in late adulthood.**

**Childhood trauma may exacerbate the association between gene expression and low SES in adulthood.**

- **Early life adversity may increase later life reactivity to stress.**

# ACKNOWLEDGMENTS

This research was supported by the National Institute on Aging, Grants P30AG017265 and T32AG0037, as well as the HRS cooperative agreement NIA U01 AG009740

## Co-Contributors:

Eileen Crimmins

Steve Cole

David Weir

**Self-reported items used to measure adversity**

---

**Childhood SES (Possible Range 0-5)**

- Before age 16, would you say your family during that time was pretty well off financially, about average, or poor? (poor=1)
- Before age 16, was there a time when you or your family received help from relatives because of financial difficulties?
- While you were growing up, before age 16, did financial difficulties ever cause you or your family to move to a different place?
- Mother had less than 9 years of education

**Father had less than 9 years of education**

---

**Childhood Traumas (Possible Range 0-2)**

- Before you were 18 years old, did either of your parents drink or use drugs so often that it caused problems in the family?
- Before you were 18 years old, were you ever physically abused by either of your parents?

**Childhood Health (Possible Range 0-6)**

- Before you were 16 years old, did you have asthma?
- Before you were 16 years old, did you have diabetes?
- Before you were 16 years old, did you have heart problems?
- Before you were 16 years old, did you have ear problems?
- Before you were 16 years old, did you have severe headaches/migraines?
- Before you were 16 years old, did you have epilepsy/seizures?
- Before you were 16 years old, did you have respiratory problems?
- Before you were 16 years old, did you have hypertension?

**Adulthood Traumas (Possible Range 0-7)**

- Has a child of yours ever died?
- Have you ever been in a major fire, flood, earthquake, or other natural disaster?
- Have you ever fired a weapon in combat or been fired upon in combat?
- Has your spouse, partner, or child ever been addicted to drugs or alcohol?
- Were you the victim of a serious physical attack or assault in your life?
- Did you ever have a life-threatening illness or accident?
- Did your spouse or a child of yours ever have a life-threatening illness or accident?

**Adulthood Low SES (0, 1)**

- Participant had less than 9 years of education
-