

PIONEERS THEN.

LEADERS NOW.



STUDENT HANDBOOK

2025 - 2026

USC
Leonard
Davis

School of Gerontology

Greetings from the Dean: Pinchas Cohen, M.D.	4
History of the Andrus Gerontology Center and USC Leonard Davis School of Gerontology	5
Degrees	6
Student Services	7
›A Letter From the Student Advisor	
›Student Opportunities	
›Resources	
Faculty	10
Staff	16
Students	19
Course Requirements	47
›Minor in Individuals, Societies, and Aging	
›Minor in Science, Health, and Aging	
›Geroscience Minor	
›Bachelor of Science in Human Development & Aging - Social Science Track	
›Bachelor of Science in Human Development & Aging - Health Science Track	
›Bachelor of Science in Lifespan Health	
›Graduate Certificate in Gerontology	
›Master of Arts in Long Term Care Administration	
›Master of Arts in Aging Services Management	
›Master of Arts in Senior Living Hospitality	
›Master of Science in Applied Technology and Aging	
›Master of Arts in Medical Gerontology	
›Master of Arts in Foodservice Management and Dietetics	
›Master of Science in Lifespan, Nutrition and Dietetics	
›Master of Science in Nutritional Science	
›Master of Science in Nutrition, Healthspan, and Longevity	
›Master of Science in Aging Biology	
›Master of Arts in Gerontology	
›Master of Science in Gerontology	
›Master of Science in Gerontology & Master of Business Administration	
›Master of Science in Gerontology & Juris Doctorate	
›Master of Science in Gerontology & Doctor of Pharmacy	
›Master of Science in Gerontology & Master of Health Administration	
›Master of Science in Gerontology & Master of Public Administration	
›Master of Science in Gerontology & Master of Social Work	



Welcome!

Congratulations once again on your admission to the USC Leonard Davis School of Gerontology!

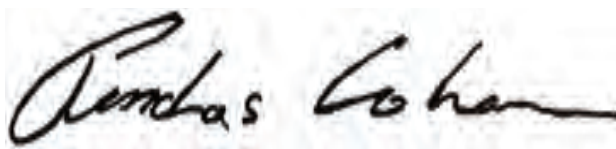
I hope this student handbook will answer many of the questions that arise as you begin your journey, and will help you to become more familiar with the amazing faculty, students and surroundings here.

Aging truly is the most universal of human experiences, and we are the very tip of the spear of the aging revolution here at the USC Leonard Davis School. As a small school within a large research university, we ensure that our students receive rigorous, highly personalized educational experiences studying with some of the world's leading experts in fields such as biology, neuroscience, psychology, sociology and public policy.

Gerontology—the study of aging across the lifespan—is an exciting field that contains a wide range of opportunities for those who study it. We are proud to be the world's oldest and largest school of gerontology, and hold ourselves to a lofty mission: to enhance healthy aging through research, service and education.

I encourage you to make the most of your experience here, both in and out of the classroom or laboratory. A great place to start would be to start making connections: with your fellow students, with our staff, with our faculty. I personally look forward to meeting each and every one of you in the coming semester, and to seeing the fantastic things that you will accomplish here, and beyond.

Sincerely,

A handwritten signature in black ink, reading "Pinchas Cohen". The signature is fluid and cursive, with the first name "Pinchas" written in a larger, more prominent script than the last name "Cohen".

Pinchas Cohen, M.D.
Dean, USC Leonard Davis School of Gerontology
Executive Director, Andrus Gerontology Center



ANDRUS GERONTOLOGY CENTER AND USC LEONARD DAVIS SCHOOL OF GERONTOLOGY HISTORY

Founded in 1975, the USC Leonard Davis School of Gerontology is the oldest and largest school of its type in the world. We offer the most comprehensive selection of gerontology degree programs found anywhere, a variety of outstanding research opportunities and a challenging yet supportive academic environment.

The USC Leonard Davis School of Gerontology and its research and services arm, the Ethel Percy Andrus Gerontology Center, are home to today's leaders in the field, as well as to tomorrow's.



We take our names in honor of two pioneers in the field of aging services, **Ethel Percy Andrus, Ph.D.**, and **Leonard Davis**, who were also the co-founders of AARP.

Faculty at the USC Leonard Davis School conduct basic and applied research across multiple disciplines, which provides graduate and postgraduate training in the biological, social, policy and behavioral sciences.

In addition to the USC Leonard Davis School, the Andrus Center houses a wide array of research projects, centers and institutes, including the USC/UCLA Center in Biodemography and Population Health, the Los Angeles

Caregivers Resource Center, the USC Longevity Institute, the Emotion & Cognition Lab and the Fall Prevention Center of Excellence, among many others.

There are also opportunities to take courses in other areas of the university including the medical campus; you may also attend lectures and seminars at UCLA and the RAND Corporation.

As you can see, the USC Leonard Davis School of Gerontology is a dynamic, exciting and highly respected institution...and we're so glad to have you aboard!

Welcome to our community!

The USC Leonard Davis School of Gerontology offers:

Minors

- Individuals, Societies and Aging
- Science, Health and Aging
- Geroscience

Bachelor's Degrees

- B.S. in Human Development and Aging
- B.S. in Lifespan Health

Certificates

- Graduate Certificate in Gerontology

Master's Degrees

- Master of Arts in Long Term Care Administration (MALTCA)
- Master of Arts Aging Services Management (MAASM)
- Master of Arts in Senior Living Hospitality (MASLH)
- Master of Arts in Medical Gerontology (MAMG)
- Master of Arts in Foodservice Management and Dietetics (MAFMD)
- Master of Arts in Gerontology (MAG)
- Master of Science in Gerontology (MSG)
- Master of Science in Applied Technology and Aging (MSATA)
- Master of Science in Lifespan, Nutrition, and Dietetics (MSLND)
- Master of Science in Nutritional Science (MSNS)
- Master of Science in Nutrition, Healthspan & Longevity (MSNHL)
- Master of Science in Aging Biology

Dual Degrees

In tandem with the MSG, you can also earn:

- Master of Business Administration (MSG/MBA)
- Juris Doctor (MSG/JD)
- Master of Public Administration (MSG/MPA)
- Master of Health Administration (MSG/MHA)
- Master of Social Work (MSG/MSW)
- Doctor of Pharmacy (MSG/PharmD)

Doctoral Degrees

- Doctorate in Longevity Arts and Sciences
- Ph.D. in Gerontology
- Ph.D. in Biology of Aging



Complete descriptions and requirements:

<http://gero.usc.edu>



Jim deVera
(213) 740-1729
edevera@usc.edu

We're Jim deVera, Sara Robinson, and Gino Andreano, the student advisors for the USC Leonard Davis School of Gerontology! Our job is to help you successfully navigate your studies here.

We'll do everything we can to assist you or to refer you to the proper individual or office, but when it comes to university guidelines and policies, communication is key! Ask if you have questions. Just remember: while we're here to help you with any questions or concerns you may have, it is ultimately *your* responsibility to complete all degree requirements.



Sara Robinson
(213) 740-1728
sararobi@usc.edu

We will frequently email students with announcements of upcoming events, scholarships, job openings, enrichment opportunities and additional USC and USC Leonard Davis School news. Please make sure that you check your USC email often.

We know being a student means you're going to be busy, but we suggest that you consider staying in regular communication with us as well as with our faculty and staff.

The better we get to know you and your unique skills, passions and goals, the more likely we are to be able to help you reach them, suggest you for award nominations or to connect you with likeminded colleagues or professional opportunities.



Gino Andreano
(213) 821-3354
gandrean@usc.edu

The USC Leonard Davis School of Gerontology is full of people who share your wonderful dream of improving the quality of life for older adults, and it's never too early to start building a vibrant, supportive academic, personal and professional network. We're so glad you're here, and we want to do all we can to help you succeed. We look forward to hearing from you!

Fight On!

Student Gerontology Association (SGA)

Undergrad and grad students come together to pursue educational, philanthropic and social activities throughout the year. Besides completing service projects, SGA helps students build strong bonds and have fun!

<https://www.facebook.com/USCSGA>

Fall Prevention Center of Excellence (FPCE)

One of the many successful Centers housed in our School, FPCE works to help raise awareness and increase fall prevention efforts locally and nationally alike. There are frequently opportunities for students to be a part of FPCE as work studies or volunteers.

<http://stopfalls.org>

Research

The USC Leonard Davis School of Gerontology faculty and students are constantly pushing the boundaries of their various disciplines. There are also opportunities for students of all ages to participate in a variety of studies!

<https://gero.usc.edu/research-service-initiatives/>

The Andrus Volunteers

A diverse group of active, engaged older adults who provide services and support to the USC Leonard Davis School, the Andrus Volunteers are happy to help students by providing interviews as well as friendship and help on additional projects and opportunities.

Leon Watts (leonwatt@usc.edu)

Student Health Resources

Successfully balancing work, school and life responsibilities can be overwhelming. Some of the many services offered by USC's Health Center include counseling, medical services and wellness/health promotion resources.

<https://studenthealth.usc.edu>



Graduate Student Government

Students can enhance their graduate experience at USC with the many different opportunities through Graduate Student Government, such as research, faculty interactions, and advocacy initiatives.

<https://gsg.usc.edu>

GEMSTEM

The GEMSTEM program integrates research, education, and professionalization for aging curious undergraduate scholarships at USC from underrepresented minority backgrounds.

Sara Robinson (sararobi@usc.edu)

RESOURCES

Advising

We recommend you meet with your the student advisors, every semester. Advising for undergrads is mandatory for undergrads in the third and fifth semesters. You may request an advising appointment by using the appointment link on your advisor's email signature or the appropriate link below:

Jim deVera:

<https://calendly.com/edevera-usc>

Jennifer Lobato:

Sara Robinson:

<https://usc.edu/advice>

Registration

New student registration typically occurs during orientation (June for undergraduates; July for graduate students). Registration for continuing students typically begins end of March for the fall semester and end of October for spring semester.

Registration Instructions

1. Log on to the Web Registration website:

<http://www.usc.edu/myusc>

(The myUSC and USC Web Mail logins are the same.)

2. If you need to request a registration appointment time, call (213) 740-8500 or email register@usc.edu. Have your 10-digit USC ID number handy.

3. To request d-clearance for certain courses, complete the Wufoo form: <https://uscdavis.wufoo.com/forms/m1yqf2915plzzd/>

Registration Deadlines

Typically, for non-summer courses:

- The add/drop deadline is the end of the third week of classes
- The “drop with a W” deadline is the end of the twelfth week of classes

It is your responsibility to confirm these deadlines as well as additional important dates at the **Schedule of Classes** (<http://classes.usc.edu/>).

Important Web Resources

USC Policies and Policy Governance

<https://policy.usc.edu/>

myUSC

<http://my.usc.edu>

Brightspace

<https://brightspace.usc.edu/d2l/home>

STARS Report

A representation of your degree progress, this report contains completed courses and grades as well as credits to be completed.

USC Gmail

<http://mail.google.com/a/usc.edu>

USC Catalogue

<http://catalogue.usc.edu/>

The USC Catalogue is the document of authority for all students. The program requirements listed in the USC Catalogue supersede any information which may be contained in any bulletin or viewbook of any school or department.

The university reserves the right to change its policies, rules, regulations, requirements for graduation, course offerings and any other contents of this catalogue at any time.

Dean



Pinchas Cohen, M.D.

Dean, USC Leonard Davis School of Gerontology

William and Sylvia Kugel Dean's Chair in Gerontology

Distinguished Professor of Gerontology, Medicine and Biological Sciences

Tenured / Tenure Track Faculty



Jennifer Ailshire, PhD

Professor of Gerontology and Sociology

Associate Dean of Research

Associate Dean of International Programs and Global Initiatives



Bérénice Benayoun, PhD

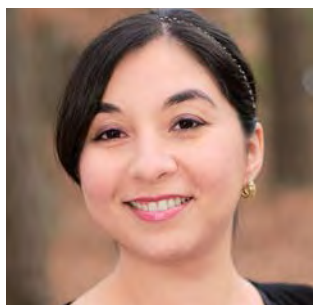
Associate Professor of Gerontology, Biological Sciences, and Cancer Biology and Pharmacology & Pharmaceutical Sciences



Lauren Brown, PhD

Assistant Professor of Gerontology

Edward L. Schneider, MD, Chair in Gerontological Research



Constanza Cortes, PhD

Assistant Professor of Gerontology



Eileen Crimmins, PhD

AARP Chair of Gerontology

University Professor



Sean Curran, PhD

Vice Dean and Professor of Gerontology

Dean of Faculty and Research

James E. Birren Chair in Gerontology



Teal Eich, PhD

Associate Professor of Gerontology and Psychology

Associate Dean for Arts and Healthy Aging



Susan Enguídanos, PhD, MPH

Associate Professor of Gerontology



Francesca Falzarano, PhD
Assistant Professor of Gerontology



Eleanor Hayes-Larson, PhD, MPH
Assistant Professor of Gerontology



Cristal M. Hill, PhD
Assistant Professor of Gerontology



Andrei Irimia, PhD
Associate Professor of Gerontology, Quantitative and Computational Biology, Biomedical Engineering and Neuroscience



Mireille Jacobson, PhD
Professor of Gerontology and Public Policy

Assistant Dean of Academic Initiatives



Michelle Keller, PhD

Assistant Professor of Gerontology

Leonard and Sophie Davis Early Career Endowed Chair in
Minority Aging



Changhan David Lee, PhD

Associate Professor of Gerontology



Valter Longo, PhD

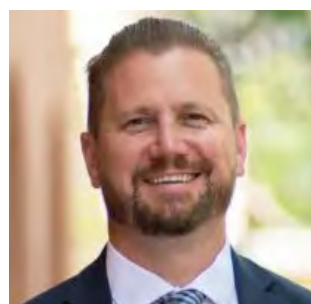
Edna M. Jones Chair in Gerontology

Professor of Gerontology and Biological Sciences



Mara Mather, PhD

Professor of Gerontology, Psychology and Biomedical Engineering



Daniel Nation, PhD

Professor of Gerontology and Medicine

Merle H. Bensinger Professorship in Gerontology



Christian Pike, PhD
Professor of Gerontology

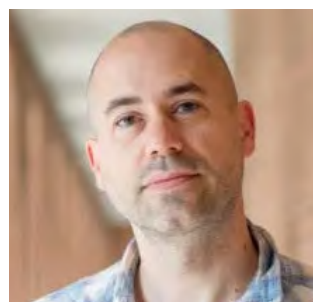
Assistant Dean of Research



Ryo Sanabria, PhD
Assistant Professor of Gerontology



Edward Schneider, MD
Professor of Gerontology, Medicine, and Biology



Marc Vermust, PhD
Associate Professor of Gerontology and Cancer Biology



John Walsh, PhD
Associate Professor of Gerontology
Associate Dean of Education



Kathleen Wilber, PhD

Mary Pickford Foundation Chair in Gerontology

Professor of Gerontology



Elizabeth Zelinski, PhD

Professor of Gerontology and Psychology

To read the complete biographies of our tenured and tenure track faculty, as well as to see all additional members of our faculty, visit
<http://gero.usc.edu/faculty>





Maria Henke, MA

Senior Associate Dean, USC Leonard Davis School of Gerontology

With many years of experience in higher education, Associate Dean Henke heads the educational programs at the USC Leonard Davis School and is one of its top administrators.



Jim Alejandro

Director of Distance Learning Programs

Jim ensures all online courses run smoothly and provides technical assistance/support for smart classrooms and the auditorium.



Gino Andreano

Admissions Coordinator

Gino serves as the Admission Coordinator for graduate students. He assists students through the admissions process and matriculation to the university.



Jim deVera, MMFT

Student Advisor

Jim is available for academic advising, course planning and registration as well as helping with any additional issues that students may have.



Jazmin Dizon

Admission Counselor

Jazmin is a USC B.A. in English grad. As an Admission Counselor, she assists prospective students by guiding them through the admissions process and sharing more information about the school's programs.



Angela Estrada
Admission Counselor

Angela recruits prospective students for the graduate and PhD programs. She can assist students with any questions about the admissions process.



Lisa Huynh
Admission Counselor

Lisa helps students navigate the admission process. She also spearheads many of our recruiting efforts. She is available to answer any questions students have.



Leigh Lloyd
Administrative Assistant

Leigh works in student services and assists with events, courses, and other internal procedures. She can also help direct students with questions.



Jake Maish
Admission Counselor

Jake is an admission counselor and recruiter for the graduate and PhD programs. He counsels prospective students about our programs and can answer questions about career opportunities in gerontology.



May Ng
IT Director and Director of International Student Initiatives

May oversees the School's computing technology and services. She also engages with international students and associates with international delegates.



Anna Quyen Nguyen, MSG, OTD
Director of Internship Training

Anna coordinates the internship/practicum placements for gerontology students, enables professional networking, and nurtures confidence about their training to land that awesome job!



Sara Robinson, MS
Academic Advisor, Admission Counselor

Sara is available for undergraduate academic advising and facilitates the admissions process and recruiting future students. She also coordinates the gerontology summer study abroad programs.



Steven Stumph, MA
Admission Counselor

Steven facilitates the admissions process with applicants and is responsible for recruiting future students. He also provides the public with information about the USC Leonard Davis School programs.



Isaías Tepox
Distance Education Operations Supervisor

Isaías is an IT support specialist who ensures smooth technology operations by maintaining hardware, software and network systems. He also provides technical assistance and helps create a reliable and secure learning environment.

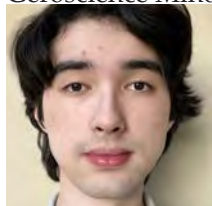
To see the complete of school staff, visit
<https://gero.usc.edu/about/administrative-teams/>

STUDENTS

MINOR IN GERONTOLOGY



Herbert Anson
hanson@usc.edu
Spring 2023
Geroscience Minor



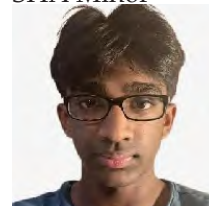
Reva Chaudhry
rchaudhr@usc.edu
Fall 2022
ISA Minor



Josie Crosthwait
jcrosthwa@usc.edu
Fall 2020
SHA Minor



Hari Ganesh
hganesh@usc.edu
Fall 2024
SHA Minor



Audrey Her
aher@usc.edu
Fall 2023
SHA Minor



Mike Huynh
mnhuynh@usc.edu
Fall 2025
ISA Minor



Tanmay Iyer
tviyer@usc.edu
Fall 2022
ISA Minor



Nic Kim
kimnj@usc.edu
Fall 2022
Geroscience Minor



Calyn Markwick Smith
markwick@usc.edu
Fall 2022
ISA Minor



Emma Massey
ermassey@usc.edu
Fall 2023
SHA Minor



Sumiya Naksi
naksi@usc.edu
Fall 2021
SHA Minor



Cyrus Nazemi
cnazemi@usc.edu
Fall 2025
ISA Minor



Avi Pandit
atpandit@usc.edu
Fall 2022
SHA Minor



Genevieve Perry
gperry@usc.edu
Spring 2025
ISA Minor



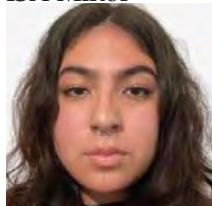
Madhav Raj
madhavra@usc.edu
Fall 2024
ISA Minor



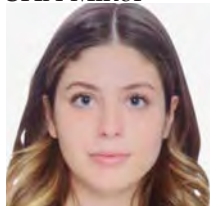
Isabella Rinaldi
irinaldi@usc.edu
Fall 2024
ISA Minor



Noelle Rueda
noelleru@usc.edu
Fall 2024
ISA Minor



Lara Sadi
lsadi@usc.edu
Fall 2024
SHA Minor



Arsalan Saeed
arsalans@usc.edu
Spring 2023
Geroscience Minor



Nikki Sanglimsuwan
nsanglim@usc.edu
Fall 2024
SHA Minor



STUDENTS

Shreshth Shrivastava
shreshth@usc.edu
Fall 2024
ISA Minor



Isabelle Sununu
isununu@usc.edu
Fall 2022
SHA Minor



Risha Surana
rsurana@usc.edu
Fall 2022
Geroscience Minor



Coco Wang
cocowang@usc.edu
Fall 2023
ISA Minor

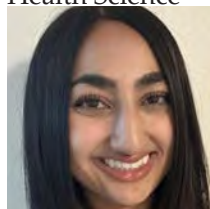


Sarah Zhang
zhangsar@usc.edu
Spring 2025
Geroscience Minor

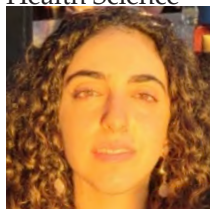


BACHELOR OF SCIENCE IN GERONTOLOGY

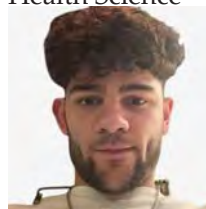
Aliza Arfan
aarfan@usc.edu
Fall 2023
Health Science



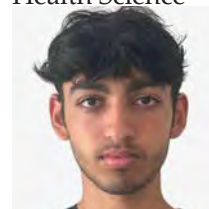
Mariam Astvatsatrian
astvatsa@usc.edu
Fall 2022
Health Science



Alec Baghoomian
alecbagh@usc.edu
Fall 2025
Health Science



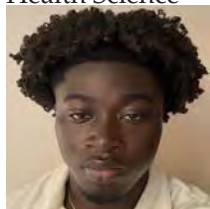
Dylan Bakhshi
dbakhshi@usc.edu
Fall 2024
Health Science



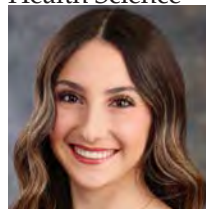
Macy Barham
mbarham@usc.edu
Fall 2024
Health Science



Musa Bittaye
bittaye@usc.edu
Spring 2024
Health Science



Nicole Chakbazof
chakbazo@usc.edu
Fall 2023
Health Science



Noelle Chakbazof
nchakbaz@usc.edu
Fall 2024
Health Science



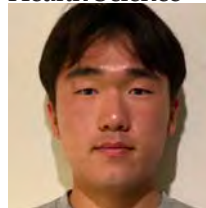
Rosey Chang
rhchang@usc.edu
Spring 2025
Health Science



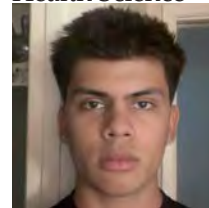
Ethen Chen
ethenche@usc.edu
Fall 2024
Health Science



Hyunung Choi
hyunungc@usc.edu
Fall 2023
Health Science



Benjamin Cholico
bcholico@usc.edu
Fall 2025
Health Science



STUDENTS

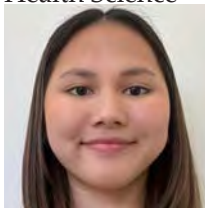
Rebekah Cudjoe
rcudjoe@usc.edu
Fall 2025
Health Science



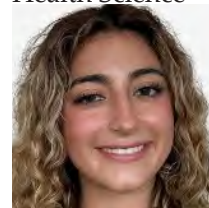
Kyleigh Cunningham
kyleighc@usc.edu
Fall 2024
Lifespan Health



Madison Don
mdon@usc.edu
Fall 2023
Health Science



Farangis Ebrahimi
febrahi@usc.edu
Fall 2025
Health Science



Chloe Elderkin
elderkin@usc.edu
Fall 2023
Lifespan Health



Anna Entin
aentin@usc.edu
Fall 2024
Health Science



Isabella Faccio
ifaccio@usc.edu
Fall 2023
Lifespan Health



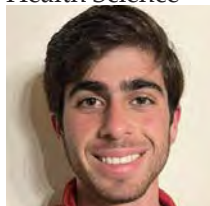
Parker Firestone
pfiresto@usc.edu
Fall 2023
Social Science



Cora Fisher
corafish@usc.edu
Spring 2025
Health Science



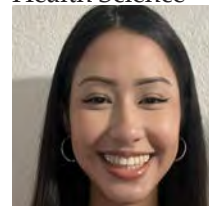
Pasha Fooman
fooman@usc.edu
Fall 2023
Health Science



Ireland Foster
ifoster@usc.edu
Spring 2025
Lifespan Health



Genevie Gutierrez
genevie@usc.edu
Fall 2023
Health Science



Sophie Hameed
snhameed@usc.edu
Fall 2023
Health Science



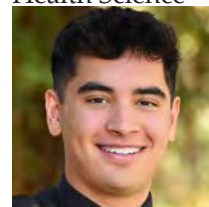
Maaha Hashmani
mhashman@usc.edu
Fall 2025
Health Science



Colin Heenan
cheenan@usc.edu
Fall 2024
Lifespan Health



Michael Hein
mdhein@usc.edu
Fall 2025
Health Science



Anna Hong
honganna@usc.edu
Fall 2025
Health Science



Eric Hwang
jeongeon@usc.edu
Fall 2022
Health Science



Ryan Hwang
jihoonhw@usc.edu
Fall 2022
Social Science



Joseph Jiang
jiangsiy@usc.edu
Fall 2025
Social Science



STUDENTS

Mark Jin
markjin@usc.edu
Fall 2023
Health Science



Sidney Kalin
skal@usc.edu
Fall 2022
Health Science



Ashley Kim
adkim@usc.edu
Spring 2025
Health Science



Lauren Kim
laurenyk@usc.edu
Spring 2025
Health Science



Ryan Kober
rfkober@usc.edu
Fall 2022
Health Science



Linglin Kong
linglink@usc.edu
Fall 2025
Health Science



Ella Krane
ellakran@usc.edu
Fall 2025
Social Health



Kalyan Krish
kkrish@usc.edu
Fall 2023
Health Science



Veronica Kuo
kuoveron@usc.edu
Fall 2023
Lifespan Health



Marguerite Larson
melarson@usc.edu
Fall 2022
Social Science



Jun Lee
jhlee@usc.edu
Fall 2025
Health Science



Claire Lee
clee2655@usc.edu
Fall 2025
Health Science



Thomas Lee
tjlee@usc.edu
Fall 2024
Health Science



Karen Li
kli86482@usc.edu
Fall 2022
Health Science



Wendy Li
wendyli@usc.edu
Fall 2023
Lifespan Health



Sabrina Lin
linsabri@usc.edu
Fall 2024
Health Science



Eddy Lu
eylu@usc.edu
Fall 2022
Lifespan Health



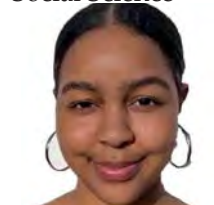
Jay Ly
jlly@usc.edu
Fall 2022
Health Science



Natalie Mao
nlmao@usc.edu
Fall 2021
Social Science



Amor Mathershed
mathersh@usc.edu
Fall 2020
Social Science



STUDENTS

Hudson Mayfield
hmayfiel@usc.edu
Fall 2023
Health Science



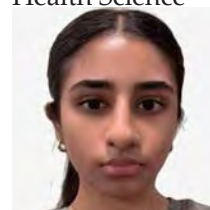
Chanelle Mizrahi
crmizrah@usc.edu
Fall 2021
Health Science



Jacey Mordkin
jmordkin@usc.edu
Fall 2023
Health Science



Aani Nagaiah
nagaiah@usc.edu
Spring 2025
Health Science



Nicole Nargizian
nargizia@usc.edu
Fall 2024
Health Science



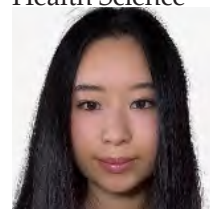
Harrison Nguyen
hnguyen@usc.edu
Fall 2025
Health Science



Maya Noda
mnoda@usc.edu
Fall 2024
Lifespan Health



Rachel Noh
rnoh@usc.edu
Fall 2025
Health Science



Imogene O'Neil
ioneil@usc.edu
Fall 2024
Health Science



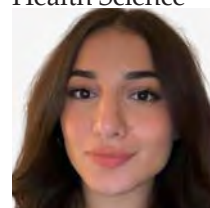
Josh Ou
joshuaou@usc.edu
Fall 2021
Health Science



Matt Ou
mjou@usc.edu
Fall 2021
Health Science



Sienna Ovanespour
ovanespo@usc.edu
Fall 2025
Health Science



Madison Palmer
mnpalmer@usc.edu
Fall 2023
Health Science



Ethan Panoussi
epanouss@usc.edu
Fall 2023
Health Science



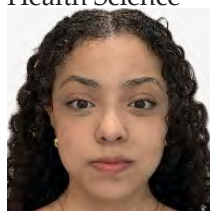
Krishan Parikh
ksparikh@usc.edu
Fall 2023
Health Science



Hailey Park
haileyp@usc.edu
Fall 2022
Health Science



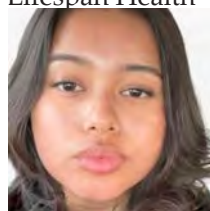
Juliette Peralta
jap45447@usc.edu
Fall 2025
Health Science



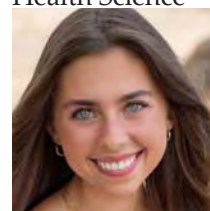
Marisol Perez
prez@usc.edu
Spring 2023
Health Science



Litzy Quinteros Oviedo
lcquinte@usc.edu
Fall 2025
Lifespan Health



Emelia Reinoso
ereinoso@usc.edu
Fall 2022
Health Science



STUDENTS

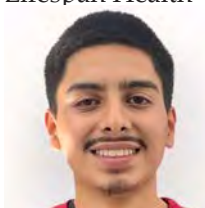
Jordan Rodecker
jrodecke@usc.edu
Fall 2024
Social Science



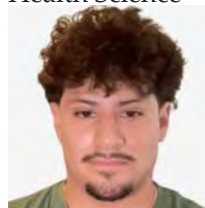
Lior Ronen
lrone@usc.edu
Fall 2024
Health Science



Chris Rosa Franco
crosafr@usc.edu
Fall 2025
Lifespan Health



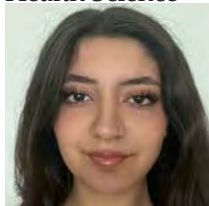
Anthony Ruiz
ruizanth@usc.edu
Fall 2025
Health Science



Sidney Saito
shsaito@usc.edu
Fall 2023
Lifespan Health



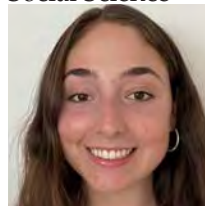
Niki Sanati
nsanati@usc.edu
Spring 2023
Health Science



Shaakhini Satchi
ssatchi@usc.edu
Fall 2023
Social Science



Sami Schilling
sschilli@usc.edu
Fall 2022
Social Science



Yutong Shao
yutongsh@usc.edu
Fall 2023
Health Science



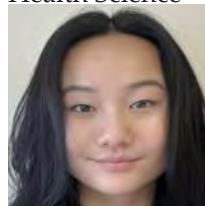
Zach Song
zasong@usc.edu
Fall 2022
Health Science



Jessica Sy
jwsy@usc.edu
Fall 2023
Health Science



Gwyneth To
gwynetht@usc.edu
Fall 2024
Health Science



Jacob Vu
jacobvu@usc.edu
Fall 2024
Health Science



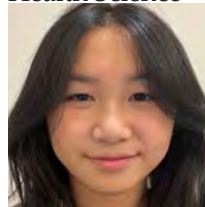
Tiffany Wang
twang248@usc.edu
Spring 2023
Health Science



Tracy Wang
ttwang@usc.edu
Spring 2024
Health Science



Makenna Wong
makennaw@usc.edu
Fall 2024
Health Science



Nicholas Yerondopoulos
yerondop@usc.edu
Fall 2024
Health Science



Vella Zhang
vellazha@usc.edu
Spring 2024
Health Science



Aydan Zhu
zhuomuzh@usc.edu
Fall 2023
Lifespan Health



STUDENTS

CERTIFICATE IN GERONTOLOGY



Chad Baker Mazara
bakermaz@usc.edu
Fall 2025
Online



Jaden Brownell
jadenbro@usc.edu
Fall 2025
Online



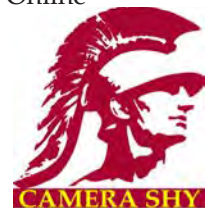
Khadine De Paiva
kdepaiva@usc.edu
Fall 2025
Online



Jack Deuchar
deuchar@usc.edu
Fall 2024
Residential



Lindsey Drew
liddrew@usc.edu
Fall 2025
Online



Elizabeth Goldman
ergoldma@usc.edu
Fall 2025
Online



Damion Harvey
djharvey@usc.edu
Fall 2025
Online



Jaren Holmes
jarenhol@usc.edu
Fall 2024
Online



Samuel Huard
shuard@usc.edu
Spring 2025
Residential



Isaiah Jones
isaiahdj@usc.edu
Fall 2024
Residential



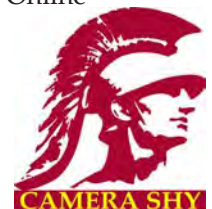
Ella Larkin
elarkin@usc.edu
Spring 2025
Online



Evangelos Makrygiannis
emakrygi@usc.edu
Fall 2025
Online



Kimberly Martin
kmartin9@usc.edu
Spring 2024
Online



Eric Mazer
emazer@usc.edu
Fall 2025
Online



Michael McFadden
mcmcfadd@usc.edu
Fall 2025
Online



Robert McRee
rlmcree@usc.edu
Spring 2025
Online



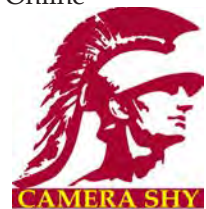
Emmett Neal
ejneal@usc.edu
Fall 2025
Online



Corey Nerhus
nerhus@usc.edu
Spring 2025
Online



Delacey Provo
dprovo@usc.edu
Fall 2025
Online



Brendan Radley-Hiles
radleyhi@usc.edu
Spring 2024
Online



STUDENTS

Grayson Reed
gareed@usc.edu
Spring 2024
Online



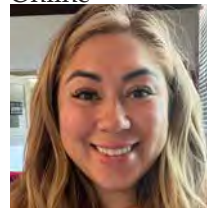
J'Onre Reed
jonreree@usc.edu
Fall 2025
Online



Charles Ross
rosschar@usc.edu
Fall 2024
Online



Kristen Shadman
shadman@usc.edu
Fall 2023
Online



Brock Slaton
bslaton@usc.edu
Fall 2025
Online



Nicole Thomas
thomasni@usc.edu
Fall 2024
Online



Jamie Vance
jjvance@usc.edu
Fall 2024
Residential



Asher Whitehead
acwhiteh@usc.edu
Fall 2025
Online



Lania Williams
laniawil@usc.edu
Fall 2025
Online



DJ Wingfield
ddwingfi@usc.edu
Spring 2025
Online



MASTER OF ARTS IN LONG TERM CARE ADMINISTRATION



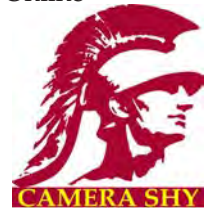
Silvia Ramos
silviara@usc.edu
Fall 2020
Online



MASTER OF ARTS IN AGING SERVICES MANAGEMENT



McCarey Bast
mbast@usc.edu
Fall 2024
Online



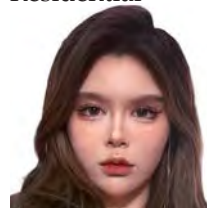
Alli Billmeyer
abillmey@usc.edu
Fall 2024
Online



Xindan Cao
xindanca@usc.edu
Fall 2024
Residential



Shangchi Chen
shangchi@usc.edu
Fall 2022
Residential



STUDENTS

Weiwei Chen
weijiche@usc.edu
Fall 2024
Residential



Jenna DiVincenzo
divincen@usc.edu
Fall 2024
Online



Yujia Dong
yujiad@usc.edu
Fall 2024
Residential



Amelia Du
jiayuedu@usc.edu
Spring 2025
Residential



Pauline Facciano
facciano@usc.edu
Fall 2025
Online



You Fan
youfan@usc.edu
Fall 2025
Residential



Yangfan Fu
yangfanf@usc.edu
Fall 2025
Residential



Aimee Fuller-Cuda
fullercu@usc.edu
Fall 2024
Online



Ashiman Gill
ashimang@usc.edu
Fall 2025
Online



Juncheng Guo
guojunch@usc.edu
Fall 2025
Residential



Yuxuan Han
hanyuxua@usc.edu
Fall 2024
Residential



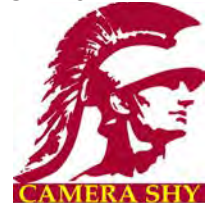
Ziqi Han
ziquihan@usc.edu
Fall 2024
Residential



Logan Harrison
lharris@usc.edu
Fall 2022
Online



Tesemma Headen
theaden@usc.edu
Fall 2025
Online



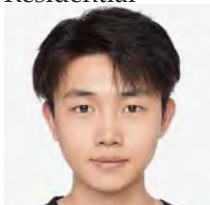
Angela Huang
anchiahu@usc.edu
Fall 2025
Residential



Lan Huang
lanhuang@usc.edu
Fall 2024
Residential



Yunkai Jia
yunkaiji@usc.edu
Fall 2025
Residential



Jingtao Jiang
jingtaoj@usc.edu
Fall 2024
Residential



Mingxue Jiang
mingxuej@usc.edu
Spring 2025
Residential



Qi Jin
qijin@usc.edu
Fall 2025
Residential



STUDENTS

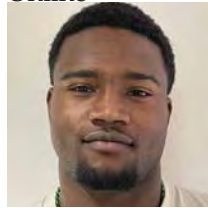
Shi Jin
shijin@usc.edu
Fall 2025
Residential



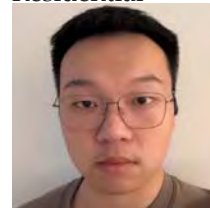
Stephanie Knott
sknott@usc.edu
Fall 2023
Online



Shane Lee
shanel@usc.edu
Spring 2023
Online



Zeqi Lai
zeqilai@usc.edu
Fall 2025
Residential



Minghui Li
mli59594@usc.edu
Fall 2025
Residential



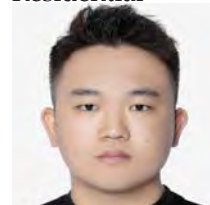
Sicheng Li
lisichen@usc.edu
Fall 2024
Residential



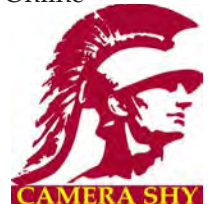
Xiaochang Lin
linxiaoc@usc.edu
Fall 2025
Residential



Jianye Mu
jianye@usc.edu
Fall 2025
Residential



Alexia Nightengale
nighteng@usc.edu
Fall 2025
Online



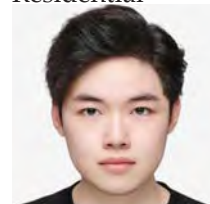
Amy Nguyen
amynnguy@usc.edu
Fall 2024
Online



Zhen Niu
zhenniu@usc.edu
Fall 2024
Residential



Can Ouyang
canouyan@usc.edu
Fall 2025
Residential



Kobe Pepe
kpepe@usc.edu
Spring 2025
Residential



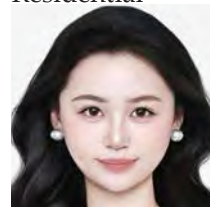
Wayne Sanner
wsanner@usc.edu
Fall 2025
Online



Franco Scheel Lopetegui
scheello@usc.edu
Summer 2023
Online



Qiwen Shen
qiwenshe@usc.edu
Fall 2025
Residential



Antoinette Starr
alstarr@usc.edu
Spring 2022
Residential



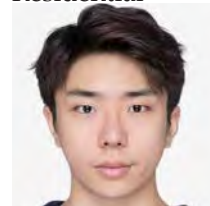
Katharine Studer
kstuder@usc.edu
Summer 2025
Online



Yiyan Sui
yiyansui@usc.edu
Fall 2025
Residential



Yuze Sun
yuzes@usc.edu
Fall 2024
Residential



STUDENTS

Aileen Voyles
avoyles@usc.edu
Fall 2025
Online



Qian Wang
qwang244@usc.edu
Fall 2025
Residential



Ziyan Wang
zwang117@usc.edu
Spring 2025
Residential



Ziyuan Wang
zwang183@usc.edu
Fall 2024
Residential



Winnie Wei
shiyaowe@usc.edu
Fall 2024
Residential



Zhang Wen
zwen6873@usc.edu
Fall 2025
Residential



Laura Wellner
lwellner@usc.edu
Spring 2023
Online



Ruiyan Xu
ruiyanxu@usc.edu
Fall 2024
Residential



Zedong Xu
zedongxu@usc.edu
Spring 2024
Residential



Wenjuan Yang
wenjuany@usc.edu
Fall 2023
Residential



Xinai Yang
xinaiyan@usc.edu
Fall 2024
Residential



Yinan Yang
yinanyan@usc.edu
Fall 2025
Residential



Zhengjian Ye
yezhenj@usc.edu
Fall 2025
Residential



Bohan Zhang
bzhang04@usc.edu
Summer 2025
Residential



Boyuan Zhang
bzhang94@usc.edu
Fall 2024
Residential



Chenyu Zhang
czhang15@usc.edu
Fall 2023
Online



Chiyi Zhang
chiyizha@usc.edu
Fall 2025
Residential



Kege Zhang
kegezhan@usc.edu
Fall 2025
Residential



Mengfan Zhang
mzhang48@usc.edu
Spring 2025
Residential



Yuhe Zhang
yuhez@usc.edu
Fall 2025
Residential



STUDENTS

Yingyun Zhang
yingyunz@usc.edu
Fall 2024
Residential



Wenqing Zhang
wzhang59@usc.edu
Fall 2025
Residential



Zixin Zhang
zzhang36@usc.edu
Fall 2025
Residential



Nancy Zhao
nxzhao@usc.edu
Fall 2024
Residential



Puyanfei Zheng
puyanfei@usc.edu
Fall 2025
Residential



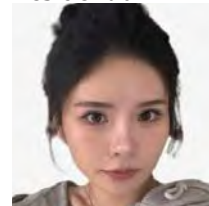
Linwei Zhu
zhulinwe@usc.edu
Fall 2024
Residential



Miaoru Zhu
miaoruzh@usc.edu
Fall 2024
Residential



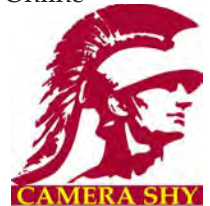
Yuchun Zou
yuchunzo@usc.edu
Fall 2024
Residential



MASTER OF ARTS IN SENIOR LIVING HOSPITALITY



Laura Burnstein
lburstei@usc.edu
Fall 2025
Online



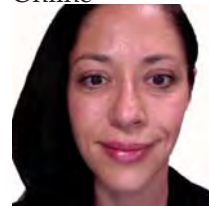
Chloe Cho
chochloe@usc.edu
Fall 2024
Residential



Kristin Cramer
kcramer@usc.edu
Fall 2024
Online



Allison Dykens
dykens@usc.edu
Fall 2021
Online



Sarah Harness
sharness@usc.edu
Fall 2025
Online



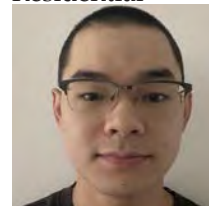
Eleonora Hristova
ehristov@usc.edu
Fall 2019
Online



Edwin Hurtado
edwinhur@usc.edu
Fall 2025
Online



Jinxiong Li
jinxiong@usc.edu
Spring 2024
Residential



Boyuan Liu
bliu4902@usc.edu
Spring 2024
Residential



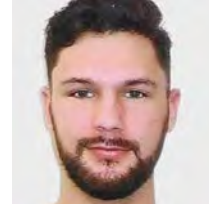
Matthew Marroquin
mm57857@usc.edu
Fall 2022
Residential



Tana McMillon
tlmcmill@usc.edu
Fall 2025
Online



Thomas Monaco
tmonaco@usc.edu
Fall 2025
Online



STUDENTS

Cynthia Orona
oronac@usc.edu
Fall 2019
Online



Kathleen Kaye Panganiban
kbpangan@usc.edu
Fall 2025
Online



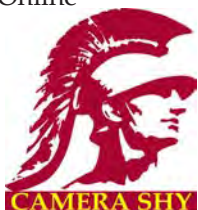
Kristen Scriven
scriven@usc.edu
Fall 2024
Online



Matthew Walsh
walshml@usc.edu
Fall 2025
Online



Susan Wang
swang605@usc.edu
Fall 2025
Online



Zeming Wang
zemingwa@usc.edu
Fall 2024
Residential



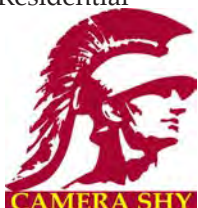
Ying-hsiu Yeh
yehy@usc.edu
Fall 2024
Residential



Zhihong Zeng
zengzhih@usc.edu
Fall 2024
Residential



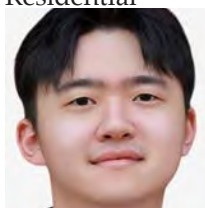
Xuzhe Zhang
xuzhezha@usc.edu
Fall 2025
Residential



Ruoning Zhou
ruoningz@usc.edu
Fall 2025
Residential



Guanhua Zhou
guanhua@usc.edu
Fall 2024
Residential



MASTER OF ARTS IN MEDICAL GERONTOLOGY

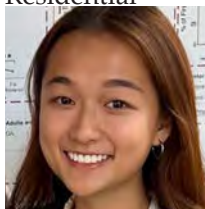
Iman Abdulkadir
iabdulka@usc.edu
Fall 2024
Residential



Manushak Agazaryan
mmagazar@usc.edu
Fall 2024
Residential



Keran Chen
keranche@usc.edu
Fall 2043
Residential



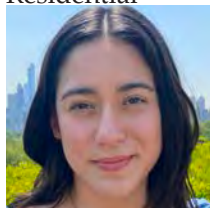
Madison Don
mdon@usc.edu
Fall 2025
Residential



AJ Escobar
ajescob@usc.edu
Fall 2025
Residential



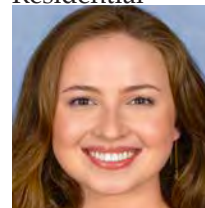
Paulina Flores
piflores@usc.edu
Fall 2025
Residential



Natalie Hester
nhester@usc.edu
Fall 2023
Online



Angalique Jimenez
angaliqu@usc.edu
Fall 2025
Residential



STUDENTS

Sidney Kalin
skal@usc.edu
Fall 2025
Residential



Ryan Kober
rkober@usc.edu
Fall 2025
Residential



Khan Mahmud
kmahmud@usc.edu
Fall 2025
Residential



Shanda Mallory
slmallor@usc.edu
Fall 2025
Online



Jalah McCullum
jmccullu@usc.edu
Fall 2025
Residential



Gerardo Pesqueira
jmccullu@usc.edu
Spring 2025
Residential



Emelia Reinoso
ereinosa@usc.edu
Spring 2025
Residential



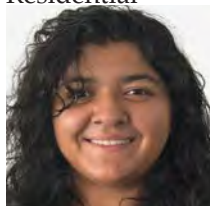
Lindsay Welton
lwelton@usc.edu
Spring 2024
Online



Qiudi Yang
qiudiyan@usc.edu
Fall 2025
Residential



Norih Zaragoza
nszarago@usc.edu
Fall 2024
Residential



MASTER OF SCIENCE IN APPLIED TECHNOLOGY AND AGING

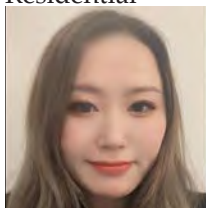
Xinlei Cao
xinleica@usc.edu
Fall 2024
Residential



Haokun Chen
haokun@usc.edu
Spring 2025
Residential



Yanfan Chen
yanfanch@usc.edu
Fall 2024
Residential



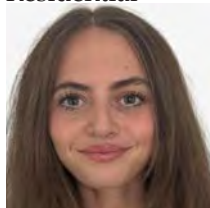
Fangyu Dong
fangyudo@usc.edu
Fall 2025
Residential



Yuepeng Gao
yuepengg@usc.edu
Spring 2025
Residential



Annabelle Greenfield
ag69282@usc.edu
Fall 2025
Residential



Jiachen Han
jiachenh@usc.edu
Fall 2025
Residential



Richard Harvey
harveyrm@usc.edu
Fall 2025
Residential



STUDENTS

Jiabao Huang
jhuang36@usc.edu
Fall 2025
Residential



Sirui Huang
siruihua@usc.edu
Spring 2025
Residential



Yingqi Ji
yingqiji@usc.edu
Fall 2024
Residential



Qin Li
qli92285@usc.edu
Fall 2024
Residential



Yang Li
yli34919@usc.edu
Spring 2024
Residential



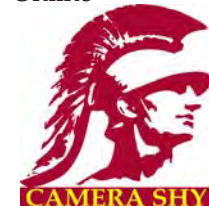
Jessica Lipe
lipe@usc.edu
Fall 2025
Online



Klarissa Marenitch
marenitc@usc.edu
Spring 2021
Online



Eric Moore
mooreeri@usc.edu
Fall 2024
Online



Weiwei Peng
weiweipe@usc.edu
Fall 2023
Online



Paris Robertson
pfrobert@usc.edu
Fall 2025
Online



Qianxiang Ruan
ruanq@usc.edu
Fall 2025
Residential



Chloe Wang
ningnawa@usc.edu
Fall 2024
Residential



Zifan Wang
wangzifa@usc.edu
Fall 2025
Residential



Qian Yu
qyu30104@usc.edu
Fall 2025
Residential



Shutong Ye
yeshuton@usc.edu
Fall 2024
Residential



Taoning Zhang
taoningz@usc.edu
Fall 2024
Residential



MASTER OF ARTS IN GERONTOLOGY

Anthony Beavers
abeavers@usc.edu
Fall 2025
Online



Vasilissa Buinaia
buinaia@usc.edu
Fall 2024
Residential



Xuhong Chen
xuhongch@usc.edu
Fall 2025
Residential



Honglei Dong
hongleid@usc.edu
Fall 2025
Residential



STUDENTS

Jennifer Dykens
jdykens@usc.edu
Fall 2025
Online



Crystal Foppe
foppe@usc.edu
Summer 2023
Online



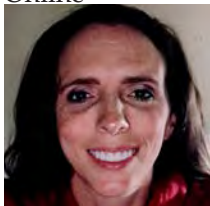
Nickolas Gentzler
gentzler@usc.edu
Fall 2025
Online



Daniel Gonzalez
dg17375@usc.edu
Fall 2025
Online



Jaclyn Guernsey
jaclyng@usc.edu
Fall 2023
Online



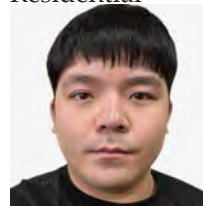
Steven Higgins
sghiggin@usc.edu
Fall 2025
Online



Elston Jones
elstonjo@usc.edu
Fall 2025
Online



Hoon Kang
hoonk@usc.edu
Fall 2025
Residential



Rene Leung
reneleun@usc.edu
Fall 2025
Residential



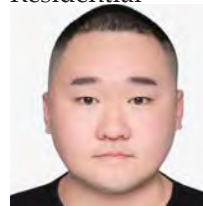
Bowen Li
bli90879@usc.edu
Fall 2025
Residential



Chengjie Liang
cliang74@usc.edu
Spring 2024
Residential



Wenbo Luo
wenboluo@usc.edu
Fall 2025
Residential



Nicole Maier
nmaier@usc.edu
Fall 2025
Residential



Caroline McColl
cmccoll@usc.edu
Fall 2025
Online



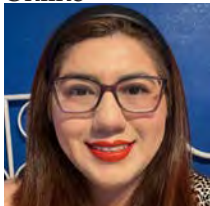
Kristen Miller
millerkm@usc.edu
Fall 2025
Online



DeCarlos Nicholson
djnichol@usc.edu
Fall 2025
Online



Ashley Perez
azperez@usc.edu
Fall 2024
Online



Yue Qi
yqi32154@usc.edu
Fall 2024
Residential



Molly Rademacher
mrademac@usc.edu
Summer 2025
Online



Janet Sasser
jdsasser@usc.edu
Fall 2025
Online



STUDENTS

Luke Stock
lestock@usc.edu
Fall 2025
Residential



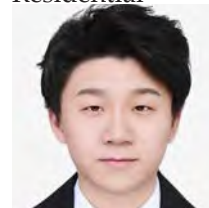
Amber Thro
thro@usc.edu
Fall 2025
Online



Caroline Waite
cswaite@usc.edu
Fall 2023
Online



Baoquan Wang
baoquanw@usc.edu
Summer 2025
Residential



Lujia Yang
lujiay@usc.edu
Fall 2025
Residential



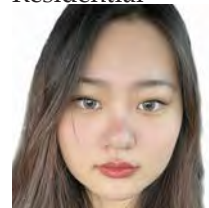
Xinjia Yin
xinjiayi@usc.edu
Fall 2025
Residential



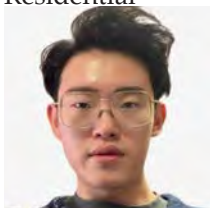
Douye Youduba
youduba@usc.edu
Fall 2025
Online



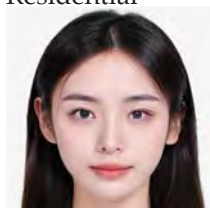
Jiahui Yu
jiahuiyu@usc.edu
Fall 2023
Residential



Dingchuan Zhang
dzhang82@usc.edu
Fall 2024
Residential



Kexin Zhao
zhaokexi@usc.edu
Fall 2024
Residential

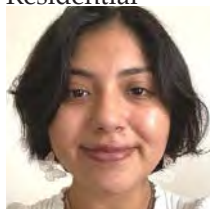


MASTER OF SCIENCE IN GERONTOLOGY

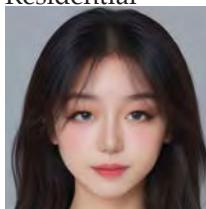
Arzina Ali
arzinaal@usc.edu
Fall 2022
Online



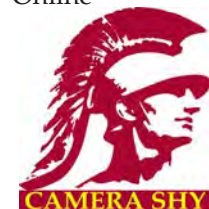
Cristina Alvisurez
alvisure@usc.edu
Spring 2021
Residential



Xixi Bao
xixibao@usc.edu
Fall 2024
Residential



Ted Bobak
bobak@usc.edu
Fall 2025
Online



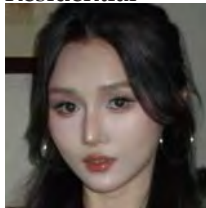
Michael Bogdanovich
msbogdan@usc.edu
Spring 2025
Residential



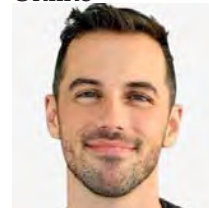
Katerina Bumbalova
msbogdan@usc.edu
Fall 2025
Online



Wei Cong
weicon@usc.edu
Fall 2024
Residential



Cameron Cote
ccote@usc.edu
Fall 2025
Online



STUDENTS

William Davis
davisw@usc.edu
Fall 2024
Online



Jada Dennis
jadadenn@usc.edu
Fall 2024
MSG/MHA



Junhao Dong
junhaodo@usc.edu
Fall 2025
Residential



Xirui Dong
xiruidon@usc.edu
Fall 2025
Residential



Salma Durra
sdurra@usc.edu
Fall 2024
Residential



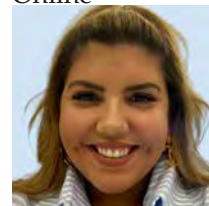
Hanzhang Fu
fuhanzha@usc.edu
Fall 2025
Residential



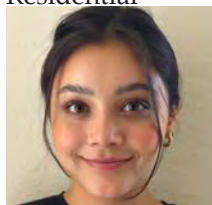
Amy Gao
amygao@usc.edu
Spring 2025
Residential



Megan Gill
mkgill@usc.edu
Fall 2025
Online



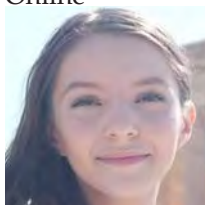
Alexa Gonzalez
axgonzal@usc.edu
Fall 2053
Residential



Ziyi Guo
ziyiguo@usc.edu
Fall 2025
Residential



Norma Haltmar
haltmar@usc.edu
Fall 2024
Online



Chengyu He
hechengy@usc.edu
Spring 2025
Residential



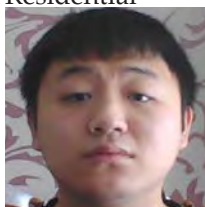
Rongrong He
herongro@usc.edu
Fall 2024
Residential



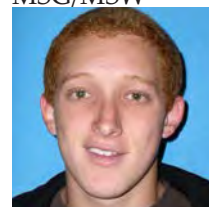
Yuhan He
yhe90237@usc.edu
Fall 2025
Residential



Kuang Ting Hu
kuangtin@usc.edu
Fall 2024
Residential



Jake Isaacs
jakeisaa@usc.edu
Fall 2020
MSG/MSW



Xinyue Hu
xhu24716@usc.edu
Fall 2025
Residential



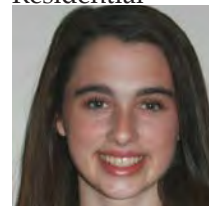
Yuna Ito
ykito@usc.edu
Fall 2024
Online



Ashley Jones
ajones@usc.edu
Fall 2024
Online



Marguerite Larson
melarson@usc.edu
Spring 2025
Residential



STUDENTS

Caitlin Krause
cvkrause@usc.edu
Fall 2023
MSG/MHA



Jun Hee Lee
jlee5847@usc.edu
Fall 2021
Online



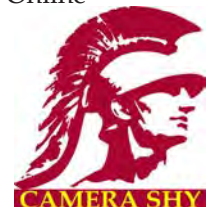
Qiaoyi Li
qiaoyili@usc.edu
Spring 2025
Residential



Yuhang Li
yuhangli@usc.edu
Spring 2024
Residential



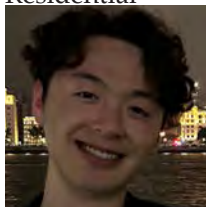
Oliva Licea
olicea@usc.edu
Fall 2022
Online



Chenglin Liu
cliu8520@usc.edu
Spring 2024
Residential



Jiangyin Liu
jliu3196@usc.edu
Fall 2025
Residential



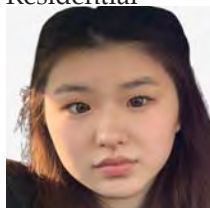
Jiayu Liu
jliu3016@usc.edu
Fall 2025
Residential



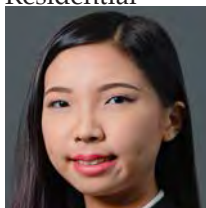
Shengyuan Liu
sliu4101@usc.edu
Fall 2024
Residential



Yiwei Liu
yiweiliu@usc.edu
Fall 2024
Residential



Kin Yee Lock
kinyeelo@usc.edu
Fall 2024
Residential



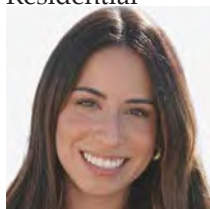
Amor Mathershed
mathersh@usc.edu
Fall 2020
Residential



Karla Marquez Espinal
knmarque@usc.edu
Fall 2025
Online



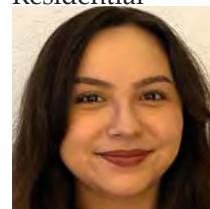
Atria Mashaki
mashaki@usc.edu
Fall 2025
Residential



Anita Mathew
anitamat@usc.edu
Fall 2024
MSG/MHA



Savanna Monson
smonson@usc.edu
Fall 2024
Residential



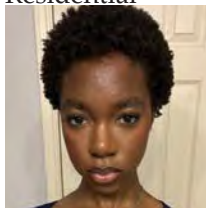
Mario Mora
mbmora@usc.edu
Fall 2024
Residential



Xinlong Niu
xinlongn@usc.edu
Fall 2024
Residential



Nkechinyere Nwakanma
nwakanma@usc.edu
Fall 2025
Residential



MJ Okma
okma@usc.edu
Fall 2025
Online

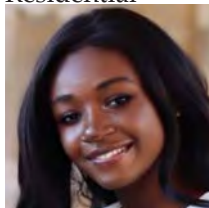


STUDENTS

Daniel Orellana-Rogers
dcorella@usc.edu
Fall 2025
Residential



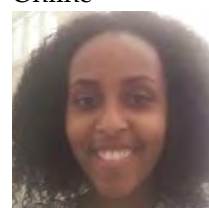
Rachel Osei-Nsafoah
oseinsaf@usc.edu
Fall 2024
Residential



Shiyi Qian
shiyiqia@usc.edu
Fall 2025
Residential



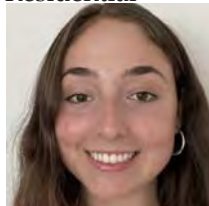
Matti Robi
mrobi@usc.edu
Fall 2021
Online



Maia Sable
maiasabl@usc.edu
Spring 2025
Online



Sami Schilling
sschilli@usc.edu
Fall 2025
Residential



Shiwei Sheng
shiweish@usc.edu
Fall 2024
Residential



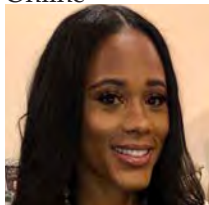
Cheng Shi
cshi6153@usc.edu
Fall 2021
Residential



Yuhan Shuai
yshuai@usc.edu
Fall 2024
Residential



Dionne Smith
dionnesm@usc.edu
Fall 2023
Online



Janet Stone
janetsto@usc.edu
Fall 2025
Online



Xingmei Tang
xingmeit@usc.edu
Spring 2024
Residential



Anne Toole
amtoole@usc.edu
Fall 2025
Online



Min Tseng
mintseng@usc.edu
Fall 2025
Residential



Vanessa Valerio
vvalerio@usc.edu
Fall 2023
Online



Bo Wang
bwang686@usc.edu
Fall 2025
Residential



Feiyi Wang
feiyiwan@usc.edu
Fall 2024
Residential



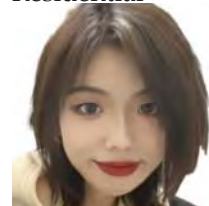
Qing Wang
qwang974@usc.edu
Fall 2025
Residential



Saiyang Wang
saiyangw@usc.edu
Fall 2024
Residential

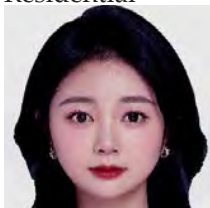


Zikang Wang
zikangw@usc.edu
Spring 2024
Residential



STUDENTS

Wen Wen
wwen4292@usc.edu
Spring 2024
Residential



Yijia Weng
yijia.wen@usc.edu
Fall 2024
Residential



Camdyn Wu
cmwu@usc.edu
Spring 2025
Residential



Daiyun Wu
daiyunwu@usc.edu
Fall 2024
Residential



Xiaoying Wu
wuxiaoyi@usc.edu
Spring 2024
Residential



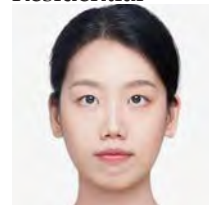
Xintong Xie
xxie5423@usc.edu
Fall 2024
Residential



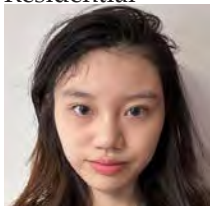
Yueqi Xiong
yueqixio@usc.edu
Fall 2024
Residential



Hongli Yang
hongliy@usc.edu
Fall 2025
Residential



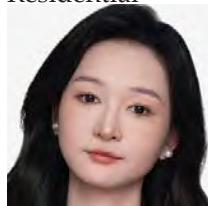
Pujie Zhang
pujiezha@usc.edu
Fall 2024
Residential



Shuo Zhang
szhang29@usc.edu
Fall 2024
Residential



Juan Zhu
juanzhu@usc.edu
Spring 2025
Residential



Zichun Zhu
zichun@usc.edu
Fall 2025
Residential

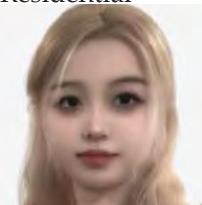


MASTER OF SCIENCE IN AGING BIOLOGY

Carlos Fajardo
cfajard@usc.edu
Fall 2025
Residential



Mansi Guo
mansiguo@usc.edu
Fall 2025
Residential

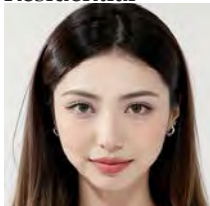


Khristina Young
kyoung91@usc.edu
Fall 2025
Residential



MASTER OF ARTS IN FOODSERVICE MANAGEMENT AND DIETETICS

Adila Adelijiang
adelijia@usc.edu
Fall 2024
Residential



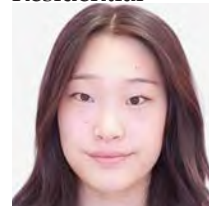
Prince Amukamara
amukamar@usc.edu
Fall 2025
Online



Jee Soo Choi
jeesooch@usc.edu
Fall 2025
Online



Katie Lee
kulee@usc.edu
Fall 2025
Residential



STUDENTS

Fariborz Nasertorabi
nasertor@usc.edu
Fall 2025
Online



Zihui Ni
zihuini@usc.edu
Spring 2025
Residential



Jiaqi Qian
jiaqi@usc.edu
Spring 2025
Residential



Xinyu Wang
xinyuw20@usc.edu
Fall 2024
Residential



Wei Wei
wwwei8136@usc.edu
Fall 2025
Residential



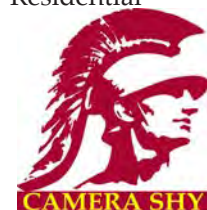
Lei Yang
lyang541@usc.edu
Fall 2024
Residential



Elleen Yi
eyyi@usc.edu
Fall 2024
Online



Siqi Zhang
siqiz492@usc.edu
Fall 2025
Residential



Yan Zhang
yanz3096@usc.edu
Fall 2025
Residential



Yichen Zhou
yzhou498@usc.edu
Fall 2024
Residential



MASTER OF SCIENCE IN LIFESPAN, NUTRITION AND DIETETICS



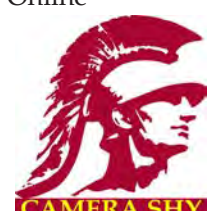
Maureen Afemsi
afemsi@usc.edu
Fall 2025
Residential



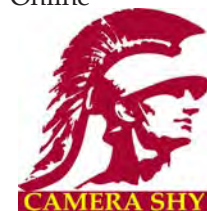
Oscar Campos Ortiz
ocamposo@usc.edu
Fall 2025
Residential



Matthew Edlind
edlind@usc.edu
Fall 2021
Online



Preiyaa Gopinath
pbgopina@usc.edu
Spring 2024
Online



Ching-Wen Huang
chuang70@usc.edu
Fall 2024
Residential



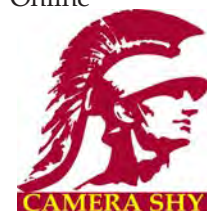
Tea Jashashvili
tea.jashashvili@usc.edu
Fall 2023
Residential



Selma Sanchez
selmasan@usc.edu
Fall 2024
Online



Hailey Springer
hspringe@usc.edu
Fall 2025
Online



STUDENTS

Yaotian Zhang
yaotian@usc.edu
Fall 2025
Residential

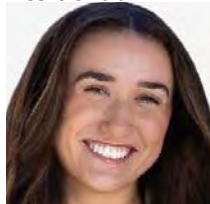


MASTER OF SCIENCE IN NUTRITIONAL SCIENCE

Hala Baabdullah
baabdull@usc.edu
Fall 2024
Residential



Brooke Beer
beerb@usc.edu
Fall 2025
Residential



Michelle Chavez
mchavez5@usc.edu
Fall 2025
Residential



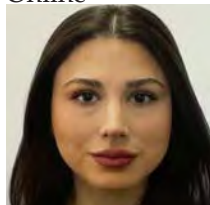
Miyalani Crisologo
mcrisolo@usc.edu
Fall 2025
Residential



Eliana Faris
emfaris@usc.edu
Fall 2024
Residential



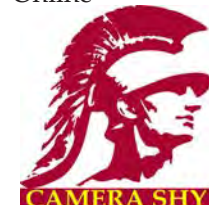
Lilia Grigoryan
liliagri@usc.edu
Fall 2024
Online



Paula Guadron-Escobar
guadrone@usc.edu
Fall 2025
Residential



Paolin Hartounian
phartoun@usc.edu
Fall 2024
Online



Adam Hughes
awhughes@usc.edu
Spring 2024
Online



Xiao Li
xli70149@usc.edu
Spring 2025
Residential



Yanjun Liu
yliu2653@usc.edu
Spring 2025
Residential



Adrienne Lui
ablui@usc.edu
Fall 2022
Online



Stephanie Novoa
novoas@usc.edu
Summer 2025
Online



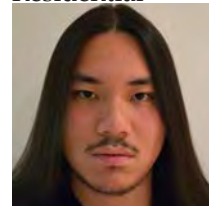
Abigail Peranil
aperanil@usc.edu
Fall 2021
Online



Steven Shih
shihstev@usc.edu
Fall 2024
Residential



Hengyi Zhang
hengyizh@usc.edu
Fall 2025
Residential





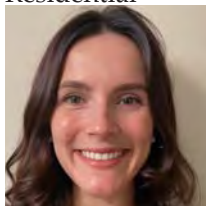
Amir Abu-Lashin
aabulash@usc.edu
Fall 2024
Residential



Faith Bentley
fbentley@usc.edu
Fall 2024
Residential



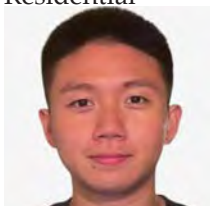
Emily Caughman
ecaughma@usc.edu
Fall 2025
Residential



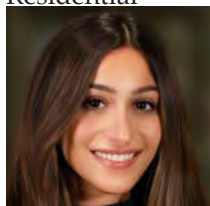
Isabel Chen
ichen048@usc.edu
Fall 2023
Residential



Yu-Ting Chiang
ychiang6@usc.edu
Fall 2024
Residential



Sophia Cohen
slcohen@usc.edu
Fall 2025
Residential



Colin Colas
ccolas@usc.edu
Fall 2025
Residential



Amy Contreras
amycontr@usc.edu
Fall 2024
Residential



Kayla Davis
kjddavis@usc.edu
Fall 2025
Residential



Dylan Flach
dflach@usc.edu
Fall 2024
Residential



Jasmine Garcia
garciajc@usc.edu
Fall 2025
Residential



Emma Haskett
ehaskett@usc.edu
Fall 2022
Online



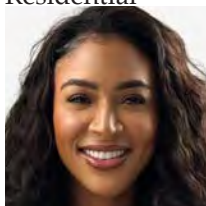
Mackenzie Hinchliffe
mhinchli@usc.edu
Fall 2025
Residential



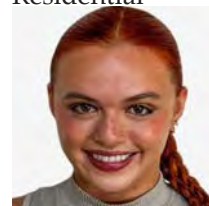
Faith Huss
fhuss@usc.edu
Fall 2024
Residential



Megan Hysaw
hysaw@usc.edu
Fall 2025
Residential



Chloe Jones
chloejo@usc.edu
Fall 2024
Residential



Nita Li
nyli@usc.edu
Fall 2024
Online



Jocelyn Liao
jyliao@usc.edu
Fall 2024
Residential



Annie Lin
alin5750@usc.edu
Fall 2024
Residential



Yuxuan Liu
yliu3281@usc.edu
Fall 2024
Residential



STUDENTS

Ashley Lyons
anlyons@usc.edu
Spring 2024
Residential



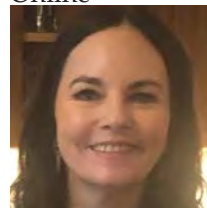
Sofia Mammaro
mammaro@usc.edu
Fall 2025
Residential



Marisa McGovern
mmmcgove@usc.edu
Fall 2024
Residential



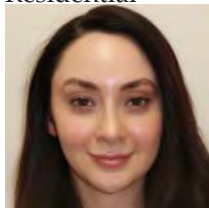
Ann Morrison
akmorris@usc.edu
Fall 2023
Online



Ava Nadell
anadell@usc.edu
Fall 2025
Residential



Sahar Obeid
sobeid@usc.edu
Fall 2025
Residential



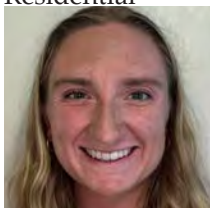
Naomi Okumura
naomioku@usc.edu
Fall 2024
Residential



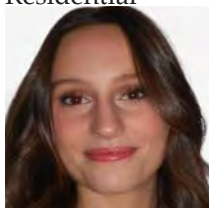
Thet Oo
thoo@usc.edu
Fall 2025
Residential



Molly Ostrowski
mostrows@usc.edu
Fall 2025
Residential



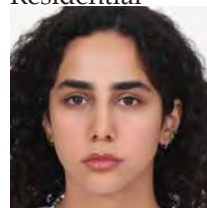
Amelia Parsons
amparson@usc.edu
Fall 2024
Residential



Yiling Qian
yilingqi@usc.edu
Fall 2025
Residential



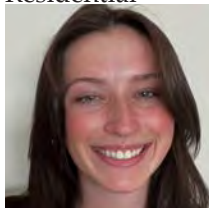
Melika Rajabi
mrajabi@usc.edu
Fall 2025
Residential



Isabela Salman
isalman@usc.edu
Fall 2025
Residential



Jenna Santolaya
santolay@usc.edu
Fall 2024
Residential



Melissa Shao
mshao@usc.edu
Fall 2024
Residential



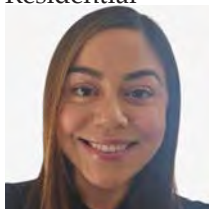
Jessica Silverstein
js20339@usc.edu
Fall 2024
Residential



Halina Szymanski
hszymans@usc.edu
Fall 2025
Residential



Angelica Velasco
av44080@usc.edu
Fall 2024
Residential



Jennifer Westfall
westfalj@usc.edu
Fall 2024
Residential



Madeline Wilkins
mxwilkin@usc.edu
Fall 2025
Online



STUDENTS

Elizabeth Willcox
ewillcox@usc.edu
Spring 2024
Online



Brittnee Wright
brittnee@usc.edu
Fall 2025
Residential



Linyi Zhang
linyizha@usc.edu
Spring 2025
Residential



Zihao Zhou
zzhou606@usc.edu
Fall 2025
Residential



DOCTORATE OF LONGEVITY ARTS AND SCIENCES

Raya Ariss
rariss@usc.edu
Fall 2025
Online



Elizabeth Coronell
ec20904@usc.edu
Fall 2025
Online



Jiahui Du
jiahuid@usc.edu
Fall 2025
Residential



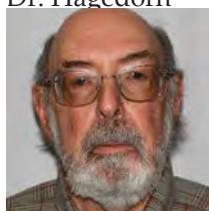
Ann Elliott
ae Elliot@usc.edu
Fall 2025
Online



Elie Gindi
eliegind@usc.edu
Fall 2025
Online



Richard Heller
rheller@usc.edu
Fall 2023
Residential
Dr. Hagedorn



Amber Ju
amberju@usc.edu
Spring 2025
Online



Andy Lin
andylin@usc.edu
Fall 2024
Online



Elizabeth Rowe
esrowe@usc.edu
Spring 2023
Online



Deborah Rucker-Turner
ruckertu@usc.edu
Fall 2025
Online



Sharidan Williams-Sotelo
sjsotelo@usc.edu
Fall 2025
Online



Tosha Strickland
tkstrick@usc.edu
Spring 2025
Online



Diane Ty
dlty@usc.edu
Fall 2025
Online





STUDENTS

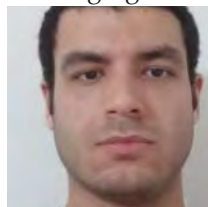
Katelyn Adam
kmadam@usc.edu
Fall 2020
Biology of Aging
Dr. Garrison



Layla Ajouz
ajouz@usc.edu
Fall 2024
Geroscience
Dr. Pike



Ammar Aly
ammaraly@usc.edu
Fall 2020
Biology of Aging
Dr. Haghighi



Maxim Averbukh
averbukh@usc.edu
Fall 2021
Biology of Aging
Dr. Sanabria



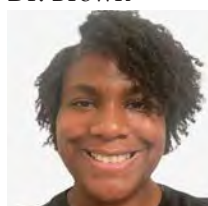
Eleanor Batista-Malat
ebatista@usc.edu
Fall 2022
Gerontology
Dr. Wilber



Misaki Belser
mbelser@usc.edu
Fall 2023
Biology of Aging
Dr. Webb



Cameron Brown
cbrown54@usc.edu
Fall 2024
Gerontology
Dr. Brown



Conscience Bwiza
bwiza@usc.edu
Fall 2016
Biology of Aging
Dr. Lee



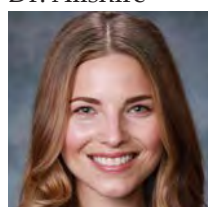
Josef Byrne
jpbyrne@usc.edu
Fall 2022
Biology of Aging
Dr. Melov



Catherine Cai
caicathe@usc.edu
Fall 2023
Biology of Aging
Dr. Webb



Jessica Capaldi
jcapaldi@usc.edu
Fall 2025
Gerontology
Dr. Ailshire



Shiqi Chen
skyechen@usc.edu
Fall 2025
Geroscience
Dr. Benayoun



Xuanyi Chen
xuanyi@usc.edu
Fall 2025
Geroscience



Gloria Cheng
glcheng@usc.edu
Fall 2025
Gerontology
Dr. Eich



Jessie Chien
chihyuan@usc.edu
Fall 2021
Gerontology
Dr. Eich



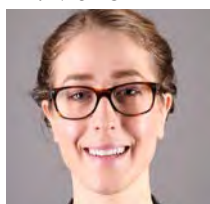
Sung Eun Cho
sungeunc@usc.edu
Fall 2024
Gerontology
Dr. Ailshire



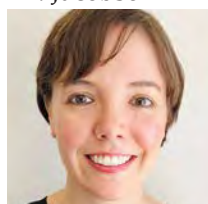
Dolly Chowdhury
dollycho@usc.edu
Fall 2022
Biology of Aging
Dr. Longo



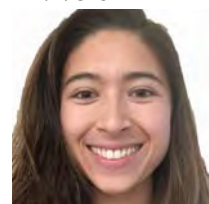
Aeowynn Coakley
acoakley@usc.edu
Fall 2021
Biology of Aging
Dr. Mullen



Lillian Estenson
estenson@usc.edu
Fall 2020
Gerontology
Dr. Jacobson

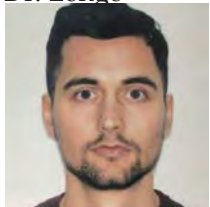


Ariel Floro
afloro@usc.edu
Fall 2021
Biology of Aging
Dr. Verdin



STUDENTS

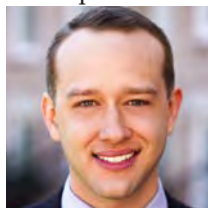
Giacomo Giuliani
giacomo@usc.edu
Spring 2022
Biology of Aging
Dr. Longo



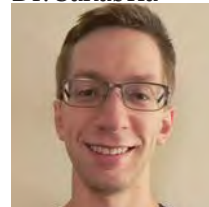
Tori Gu
tongyugu@usc.edu
Fall 2024
Gerontology
Dr. Ailshire



Jacob Holmes
jtholmes@usc.edu
Fall 2024
Geroscience
Dr. Espinoza



Adam Hruby
ahruby@usc.edu
Fall 2022
Biology of Aging
Dr. Sanabria



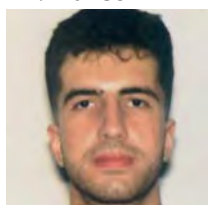
Brendan Hughes
junwei@usc.edu
Fall 2022
Biology of Aging
Dr. Andersen



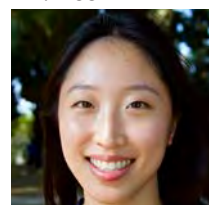
Preeti Iyengar
piyengar@usc.edu
Fall 2025
Geroscience



Brennen Keuchel
keuchel@usc.edu
Fall 2023
Biology of Aging
Dr. Hansen



Jessica Kim
jkim2221@usc.edu
Fall 2024
Geroscience
Dr. Lee



Juri Kim
jurikim@usc.edu
Fall 2023
Biology of Aging
Dr. Sanabria



Changyeob Lee
changyeo@usc.edu
Fall 2024
Geroscience
Dr. Cohen



Yanxi Li
yanxi@usc.edu
Fall 2024
Geroscience
Dr. Cohen



Mi (Michelle) Liu
miliu@usc.edu
Fall 2023
Biology of Aging
Dr. Bonaguidi



Ryan Lu
ryanlu@usc.edu
Fall 2019
Biology of Aging
Dr. Benayoun



Kenya Luna
kenyalun@usc.edu
Fall 2024
Gerontology
Dr. Brown



Tyne McHugh
tynemchu@usc.edu
Fall 2021
Biology of Aging
Dr. Ellerby



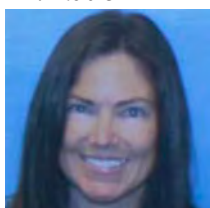
Shivay Parihar
sparihar@usc.edu
Fall 2024
Geroscience
Dr. Sanabria



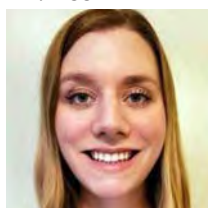
Dinithi Perera
dinithip@usc.edu
Fall 2024
Gerontology
Dr. Keller



Melanie Quiring
m.quiring@usc.edu
Fall 2025
Gerontology
Dr. Nation



Michelle Rice
mrice@usc.edu
Fall 2020
Biology of Aging
Dr. Lee



Andrew Rodriguez
atr02872@usc.edu
Fall 2020
Biology of Aging
Dr. Garrison



STUDENTS

Elizabeth Rojas
rojasea@usc.edu
Fall 2024
Gerontology
Dr. Falzarano



Stephanie Rubinstein
srrubins@usc.edu
Fall 2021
Gerontology
Dr. Zelinski



Mahshid Shelechi
mshelech@usc.edu
Fall 2019
Biology of Aging
Dr. Longo



Cynthia Siebrand
siebrand@usc.edu
Fall 2022
Biology of Aging
Dr. Andersen



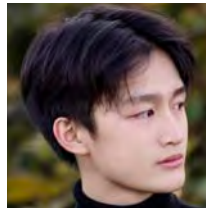
Ling-Hsuan Sun
lingsua@usc.edu
Spring 2021
Biology of Aging
Dr. Hansen



Prerana Vaddi
pvaddi@usc.edu
Fall 2023
Biology of Aging
Dr. Hill



Minwei Wang
acalexan@usc.edu
Fall 2025
Geroscience
Dr. Curran



Kristi Wisniewski
kwisniew@usc.edu
Fall 2016
Gerontology
Dr. Zelinski



Wang Xiang
wxiang50@usc.edu
Fall 2019
Biology of Aging
Dr. Bonaguidi



Mengzhao Yan
mengzhay@usc.edu
Fall 2021
Gerontology
Dr. Walsh



Woojeong Yang
woojeong@usc.edu
Fall 2023
Biology of Aging
Dr. Hiniker



Do Kyung Yoon
dokyung@usc.edu
Fall 2022
Gerontology
Dr. Eich



Wenhui Zhao
wenhuiz@usc.edu
Fall 2024
Gerontology
Dr. Mather



MINOR IN INDIVIDUALS, SOCIETIES AND AGING CORE CLASSES

20 UNITS TOTAL	SEMESTER	GRADE
GERO 320 - Psychology of Adult Development		
GERO 330 - Society and Adult Development		
GERO 340 - Policy, Values, and Power in an Aging Society		

ELECTIVE CLASSES (choose two)

GERO 380 - Diversity in Aging		
GERO 416 - Health Issues in Adulthood		
GERO 435 - Women and Aging: Psychological, Social and Political Implications		
GERO 437 - Social and Psychological Aspects of Death and Dying		
GERO 481 - Case Management for Older Adults		
GERO 491 - Practicum		

MINOR IN SCIENCE, HEALTH AND AGING CORE CLASS (* Prerequisites Required)

20 UNITS TOTAL	SEMESTER	GRADE
GERO 310 - Physiology of Aging		
GERO 414 - Neurobiology of Aging		
GERO 416 - Health Issues in Aging OR		
GERO 496 - Introduction to Clinical Geriatrics		

ELECTIVE CLASSES (choose two)

GERO 315 - A Journey Into the Mind		
GERO 415 - Neuroaffective Disorders of Aging		
GERO 437 - Social and Psychological Aspects of Death and Dying		
GERO 440 - Biodemography of Aging*		
GERO 475 - Ethical Issues in Geriatric Health Care		
GERO 495 - Practicum in Geriatric Care		

MINOR IN GEROSCIENCE**CORE CLASSES (* Prerequisites Required)**

20 UNITS TOTAL	SEMESTER	GRADE
GERO 300 - Introduction to Geroscience Research		
GERO 301 - Current Topics in Geroscience Research		
GERO 490 - Directed Research (2 units)		
GERO 490 - Directed Research (2 units)		
GERO 490 - Directed Research (2 units)		
GERO 490 - Directed Research (2 units)		

ELECTIVE CLASSES (choose one)

GERO 315 - A Journey into the Mind		
GERO 330 - Society and Adult Development		
GERO 340 - Policy, Values, and Power in an Aging Society		
GERO 380 - Diversity in Aging		
GERO 416 - Health Issues in Aging		
GERO 435 - Women and Aging: Psychological, Social and Political Implications		
GERO 440 - Biodemography of Aging*		

APPENDIX**BACHELOR OF SCIENCE IN HUMAN DEVELOPMENT AND AGING - SOCIAL SCIENCE TRACK
GENERAL EDUCATION**

128 UNITS TOTAL	SEMESTER	GRADE
WRIT 150 (Spring Freshman Year)		
WRIT 340 (Junior or Senior Year)		
A The Arts		
B Humanistic Inquiry		
B Humanistic Inquiry		
C Social Analysis		
C Social Analysis		
D Life Sciences		
E Physical Sciences		
F Quantitative Reasoning		
G Citizenship in a Global Era		
H Traditions and Historical Foundations		
General Education Seminar		

LANGUAGE (12 units of foreign language or TAC)

CORE CLASSES - Honor's Program requires GERO 497ABC and GERO 593

GERO 200-Gerontology: The Science of Adult Development		
GERO 320-Psychology of Adult Development		
GERO 330-Sociology of Adult Development		
GERO 340-Policy, Values, and Power in an Aging Society		
GERO 416-Health Issues in Aging		
GERO 491-Gerontology Practicum (Fall Sr. year)		
GERO 492-Senior Seminar in Aging (Spring Sr. year)		
GERO ELECTIVES (20 UNITS-300/400)		
Statistics: PSYC 274, PPD303, OR SOCI 314		

GENERAL ELECTIVES (8 upper division units)

APPENDIX**BACHELOR OF SCIENCE IN HUMAN DEVELOPMENT AND AGING - HEALTH SCIENCE TRACK
GENERAL EDUCATION**

128 UNITS TOTAL	SEMESTER	GRADE
WRIT 150 (Spring Freshman Year)		
WRIT 340 (Junior or Senior Year)		
A The Arts		
B Humanistic Inquiry		
B Humanistic Inquiry		
C Social Analysis		
C Social Analysis		
D Life Sciences		
E Physical Sciences		
F Quantitative Reasoning		
G Citizenship in a Global Era		
H Traditions and Historical Foundations		
General Education Seminar		

SCIENCE AND MATHEMATICS REQUIREMENTS

BISC 120L-General Biology		
BISC 220L-General Biology		
CHEM 105aL-General Chemistry I		
CHEM 105bL-General Chemistry II		
CHEM 322aL-Organic Chemistry I		
CHEM 322bL-Organic Chemistry II		
PHYS 135aL-Physics for the Life Sciences I		
PHYS 135bL-Physics for the Life Sciences II		
MATH 125-Calculus I		

CORE CLASSES - Honor's Program requires GERO 497 ABC and GERO 593

GERO 310-Physiology of Aging		
GERO 320-Psychology of Adult Development OR		
GERO 330-Sociology of Adult Development		
GERO 340-Policy, Values, and Power in an Aging Society		
GERO 414-Neurobiology of Aging		
GERO 495-Practicum in Geriatric Care		
GERO ELECTIVES (12 UNITS-300/400)		

GENERAL ELECTIVES (8 upper division units)

APPENDIX

BACHELOR OF SCIENCE IN LIFESPAN HEALTH

128 UNITS TOTAL	SEMESTER	GRADE
WRIT 150 (Spring Freshman Year)		
WRIT 340 (Junior or Senior Year)		
A The Arts		
B Humanistic Inquiry		
B Humanistic Inquiry		
C Social Analysis		
C Social Analysis		
D Life Sciences		
E Physical Sciences		
F Quantitative Reasoning		
G Citizenship in a Global Era		
H Traditions and Historical Foundations		
General Education Seminar		

LANGUAGE (12 units of foreign language or ITP)

CORE CLASSES

GERO 200-Gerontology: The Science of Adult Development		
GERO 310-Physiology of Aging		
GERO 320-Psychology of Adult Development		
GERO 416-Health Issues in Aging		
GERO 483-Global Health and Aging		
GERO 492-Senior Seminar in Aging		
GERO 495-Practicum in Geriatric Care		
GERO ELECTIVES (12 UNITS-300/400)		

SKILLS COURSES (choose 3 of the 5) * Prerequisites Required

GERO 414-Neurobiology of Aging		
GERO 437-Social and Psychological Aspects of Death and Dying		
GERO 440-Biodemography of Aging*		
GERO 475-Ethical Issues in Geriatric Care		
GERO 481-Case Management for Older Adults		

GENERAL ELECTIVES (8 upper division units)

GRADUATE CERTIFICATE IN GERONTOLOGY - RESIDENTIAL TRACK**CORE CLASSES (choose 3 of the 4)**

16 UNITS TOTAL	SEMESTER	GRADE
GERO 510 - Physiology of Development and Aging		
GERO 520 - Life Span Developmental Psychology OR		
GERO 522 - Counseling Older Adults and Their Families		
GERO 530 - Life Span Developmental Sociology OR		
GERO 585 - The Aging Family		
GERO 540 - Social Policy and Aging		

GERONTOLOGY ELECTIVE (4 units)

--	--	--

GRADUATE CERTIFICATE IN GERONTOLOGY - ONLINE TRACK**REQUIRED COURSES**

16 UNITS TOTAL	SEMESTER	GRADE
GERO 500 - Perspectives on a Changing Society: An Introduction to Aging		
GERO Elective (4 units)		

CORE CLASSES (choose 2 of the 4)

GERO 508 - The Mind and Body Connection through the Lifespan OR		
GERO 510 - Physiology of Development and Aging		
GERO 520 - Life Span Developmental Psychology OR		
GERO 522 - Counseling Older Adults and Their Families		
GERO 530 - Life Span Developmental Sociology OR		
GERO 585 - The Aging Family		
GERO 540 - Social Policy and Aging		

CERTIFICATE IN GERONTOLOGY / DOCTOR OF PHARMACY

Only available for students who are concurrently enrolled in the USC Doctor of Pharmacy program.

CORE CLASSES

24-28 UNITS TOTAL	SEMESTER	GRADE
GERO 508 - The Mind and Body Connection through the Lifespan OR		
GERO 510 - Physiology of Development and Aging		
GERO 520 - Life Span Developmental Psychology OR		
GERO 522 - Counseling Older Adults and Their Families		
GERO 530 - Life Span Developmental Sociology OR		
GERO 585 - The Aging Family		
GERO 540 - Social Policy and Aging		

ELECTIVES (8-10 units from the following)

GERO 554 - Evaluation: Incorporating Evidence-Based Practices		
GERO 555 - Integrating Gerontology		
PHRD 655 (3 units) - Geriatric Pharmacy I		
PHRD 656 (3 units) - Geriatric Pharmacy II		
PHRD 731 (6 units) - Advanced Geriatrics Clerkship		

MASTER OF ARTS IN LONG TERM CARE ADMINISTRATION (MALTCA)**REQUIRED COURSES**

30.5 UNITS TOTAL	SEMESTER	GRADE
GERO 500 - Perspectives on a Changing Society: An Introduction to Aging		
GERO 501 - Applied Legal and Regulatory Issues in Aging		
GERO 508 - The Mind and Body Connection through the Lifespan OR		
GERO 522 - Counseling Older Adults and Their Families		
GERO 550 - Administration & System Management in Programs for Older Adults		
GERO 581 (2 units) - Fundamental Skills in Gerontology		
GSBA 504a (1.5 units) - Operations Management		
GSBA 509 (1.5 units) - Marketing Management		
GSBA 510 (1.5 units) - Accounting Concepts and Financial Reporting		
PPD 601 - Management of Long-Term Care Organizations		

ELECTIVE COURSE (choose 1)

GERO 520 - Life Span Developmental Psychology OR		
GERO 530 - Life Span Developmental Sociology OR		
GERO 540 - Social Policy and Aging OR		
GERO 589 - Professional Issues in Gerontology		

APPENDIX
MASTER OF ARTS IN AGING SERVICES MANAGEMENT (MAASM)

REQUIRED COURSES (choose 3 of the 5)

32 UNITS TOTAL	SEMESTER	GRADE
GERO 500 - Perspectives on a Changing Society: An Introduction to Aging		
GERO 501 - Applied Legal and Regulatory Issues in Aging		
GERO 502 - Marketing and Shifts in Consumer Decision Making		
GERO 504 - Current Issues in Aging Services Management		
GERO 589 - Case Studies in Leadership and Change Management		

ELECTIVE COURSES (choose 5)

Students must select five electives (for a total of 20 units) of Gerontology courses from the list below. Core courses taken in excess of the 12 units required may be used toward the elective units.

GERO 499 and 599 may be taken in consultation with the academic advisor

A maximum of two GERO 400 level courses from the list below

A maximum of 4 units of GERO 590

A maximum of 8 units of GERO 591

GERO 488 - Food, Culture, Disease and Longevity in Italy and in the Mediterranean		
GERO 489 - Finding the Key to a Long, Happy Life in Nicoya, Costa Rica		
GERO 493 - Longevity and Death among Ancient and Modern European Populations		
GERO 494 - Emotion-Cognition Interactions and Aging		
GERO 498 - Nutrition, Genes, Longevity and Diseases		
GERO 499 - Special Topics		
GERO 505 - Behavioral and Social Consequences of Design and Environment		
GERO 506 - Technological Innovations in Aging (Gerontechnology)		
GERO 507 - End of Life Care		
GERO 508 - The Mind and Body Connection through the Lifespan		
GERO 509 - Mindful Aging: Spirituality, Gratitude, and Resilience		
GERO 510 - Physiology of Development and Aging		
GERO 514 - The Art of Geriatric Symptom Management		
GERO 520 - Life Span Developmental Psychology		
GERO 522 - Counseling Older Adults and Their Families		
GERO 530 - Life Span Developmental Sociology		
GERO 540 - Social Policy and Aging		
GERO 541 - Health Care Delivery Models: Comparative Approaches		
GERO 550 - Administration and Systems Management in Programs for Older Adults		
GERO 551 - Applied Policy Skills in Aging		
GERO 552 - Human Resources and Aging		
GERO 554 - Evaluation: Incorporating Evidence-Based Practices		
GERO 561 - Introduction to Aging and Normal Changes with Aging		
GERO 562 - Diseases of Aging with Emphasis on Cardiovascular Diseases and Diabetes		
GERO 563 - Geropsychology		
GERO 564 - Multiple Chronic Conditions and Older Adults		
GERO 565 - Novel Technologies in Aging and Assisted Living		
GERO 566 - Cognitive Decline: Alzheimer's Disease and Dementia and Advances in Imaging		
GERO 567 - Prevention of Chronic Diseases through Nutrition, Physical Activity and Lifestyle Changes		
GERO 568 - Adaptive Age-Friendly Environments and Injury Prevention		
GERO 585 - The Aging Family		
GERO 590 - Directed Research		
GERO 591 - Field Practicum		
GERO 593 - Research Methods		
GERO 599 - Special Topics		

APPENDIX
MASTER OF ARTS IN SENIOR LIVING HOSPITALITY (MASLH)
REQUIRED COURSES

43 UNITS TOTAL	SEMESTER	GRADE
GERO 500 - Perspectives on a Changing Society: An Introduction to Aging		
GERO 501 - Applied Legal and Regulatory Issues in Aging		
GERO 552 - Human Resources and Aging		
GERO 574 (3 units) - Leadership and Management in Senior Living		
GERO 575 (3 units) - Marketing Senior Living		
GERO 576 (3 units) - Finance and Senior Housing		
GERO 577 (2 units) - Food Service and Senior Living		
GERO 578 (2 units) - Revenue Management for Senior Living		
GERO 579 (2 units) - Branding Senior Living		
GERO 589 - Case Studies in Leadership and Change Mangement		

ELECTIVES (12 units)

Students must select three electives (for a total of 12 units). Core courses may not double count as electives. Students may take any elective courses below with a few limitations:

GERO 499 and 599 may be taken in consultation with the academic advisor

A maximum of two GERO 400 level courses from the list below / A maximum of 4 units of GERO 590 / A maximum of 8 units of GERO 591

GERO 488 - Food, Culture, Disease and Longevity in Italy and in the Mediterranean		
GERO 489 - Finding the Key to a Long, Happy Life in Nicoya, Costa Rica		
GERO 493 - Longevity and Death among Ancient and Modern European Populations		
GERO 494 - Emotion-Cognition Interactions and Aging		
GERO 498 - Nutrition, Genes, Longevity and Diseases		
GERO 499 - Special Topics		
GERO 502 - Marketing Shifts in Consumer Decision Making		
GERO 504 - Current Issues in Aging Services Management		
GERO 505 - Behavioral and Social Consequences of Design and Environment		
GERO 506 - Technological Innovations in Aging (Gerontechnology)		
GERO 507 - End of Life Care		
GERO 508 - The Mind and Body Connection through the Lifespan		
GERO 509 - Mindful Aging: Spirituality, Gratitude, and Resilience		
GERO 510 - Physiology of Development and Aging		
GERO 514 - The Art of Geriatric Symptom Management		
GERO 520 - Life Span Developmental Psychology		
GERO 522 - Counseling Older Adults and Their Families		
GERO 530 - Life Span Developmental Sociology		
GERO 540 - Social Policy and Aging		
GERO 541 - Health Care Delivery Models: Comparative Approaches		
GERO 550 - Administration and Systems Management in Programs for Older Adults		
GERO 551 - Applied Policy Skills in Aging		
GERO 561 - Introduction to Aging and Normal Changes with Aging		
GERO 562 - Diseases of Aging with Emphasis on Cardiovascular Diseases and Diabetes		
GERO 563 - Geropsychology		
GERO 564 - Multiple Chronic Conditions and Older Adults		
GERO 565 - Novel Technologies in Aging and Assisted Living		
GERO 566 - Cognitive Decline: Alzheimer's Disease and Dementia and Advances in Imaging		
GERO 567 - Prevention of Chronic Diseases through Nutrition, Physical Activity and Lifestyle Changes		
GERO 568 - Adaptive Age-Friendly Environments and Injury Prevention		
GERO 585 - The Aging Family		
GERO 590 - Directed Research		
GERO 591 Field Practicum		
GERO 593 - Research Methods		
GERO 599 - Special Topics		

APPENDIX

MASTER OF ARTS IN SENIOR LIVING HOSPITALITY (MASLH)

Advanced Standing

REQUIRED COURSES

32 UNITS TOTAL	SEMESTER	GRADE
GERO 500 - Perspectives on a Changing Society: An Introduction to Aging		
GERO 501 - Applied Legal and Regulatory Issues in Aging		
GERO 502 - Marketing and Shifts in Consumer Decision Making		
GERO 504 - Current Issues in Aging Services Management		
GERO 552 - Human Resources and Aging		
GERO 589 - Case Studies in Leadership and Change Management		

ELECTIVES (8 units)

Students must select two to four electives (for a total of 8 units minimum). Students may take any elective courses below with a few limitations:

GERO 499 and 599 may be taken in consultation with the academic adviser / A maximum of 4 units of GERO 590

GERO 488 - Food, Culture, Disease and Longevity in Italy and in the Mediterranean		
GERO 489 - Finding the Key to a Long, Happy Life in Nicoya, Costa Rica		
GERO 493 - Longevity and Death among Ancient and Modern European Populations		
GERO 494 - Emotion-Cognition Interactions and Aging		
GERO 498 - Nutrition, Genes, Longevity and Diseases		
GERO 499 - Special Topics		
GERO 505 - Behavioral and Social Consequences of Design and Environment		
GERO 506 - Technological Innovations in Aging (Gerontechnology)		
GERO 507 - End of Life Care		
GERO 508 - The Mind and Body Connection through the Lifespan		
GERO 509 - Mindful Aging: Spirituality, Gratitude, and Resilience		
GERO 510 - Physiology of Development and Aging		
GERO 514 - The Art of Geriatric Symptom Management		
GERO 520 - Life Span Developmental Psychology		
GERO 522 - Counseling Older Adults and Their Families		
GERO 530 - Life Span Developmental Sociology		
GERO 540 - Social Policy and Aging		
GERO 541 - Health Care Delivery Models: Comparative Approaches		
GERO 550 - Administration and Systems Management in Programs for Older Adults		
GERO 551 - Applied Policy Skills in Aging		
GERO 561 - Introduction to Aging and Normal Changes with Aging		
GERO 562 - Diseases of Aging with Emphasis on Cardiovascular Diseases and Diabetes		
GERO 563 - Geropsychology		
GERO 564 - Multiple Chronic Conditions and Older Adults		
GERO 565 - Novel Technologies in Aging and Assisted Living		
GERO 566 - Cognitive Decline: Alzheimer's Disease and Dementia and Advances in Imaging		
GERO 567 - Prevention of Chronic Diseases through Nutrition, Physical Activity and Lifestyle Changes		
GERO 568 - Adaptive Age-Friendly Environments and Injury Prevention		
GERO 574 (3 units) - Leadership and Management in Senior Living		
GERO 575 (3 units) - Marketing Senior Living		
GERO 576 (3 units) - Finance and Senior Housing		
GERO 577 (2 units) - Food Service and Senior Living		
GERO 578 (2 units) - Revenue Management for Senior Living		
GERO 579 (2 units) - Branding Senior Living		
GERO 585 - The Aging Family		
GERO 590 - Directed Research		
GERO 591 Field Practicum		
GERO 593 - Research Methods		
GERO 599 - Special Topics		

MASTER OF ARTS IN MEDICAL GERONTOLOGY (MAMG)**REQUIRED COURSES**

33 UNITS TOTAL	SEMESTER	GRADE
GERO 561 - Introduction to Aging and Normal Changes with Aging		
GERO 562 - Diseases of Aging with Emphasis on Cardiovascular Disease and Diabetes		
GERO 563 - Geropsychology		
GERO 564 - Treating Chronic Conditions and Older Adults		
GERO 566 - Cognitive Decline: Alzheimer's Disease and Dementia and Advances in Imaging		
GERO 567 - Prevention of Chronic Diseases through Nutrition, Physical Activity and Lifestyle Changes		

ELECTIVE COURSES (8 units)

Students must select two electives. Courses taken outside of the list below are selected in consultation with the student advisor:

GERO 565 - Novel Technologies in Aging and Assisted Living		
GERO 568 - Adaptive Age-Friendly Environments and Injury Prevention		
GERO 582 - Fundamentals of Human Physiology for Aging Studies		
GERO 583 - Health and Longevity Coaching Strategies		

MASTER OF ARTS IN FOODSERVICE MANAGEMENT AND DIETETICS (MAFMD)**REQUIRED COURSES**

32 UNITS TOTAL	SEMESTER	GRADE
GERO 411 (2 units) - Physiology, Nutrition, and Aging		
GERO 488 - Food, Culture, Disease and Longevity in Italy and the Mediterranean		
GERO 500 - Perspectives on a Changing Society: An Introduction to Aging		
GERO 512 (2 units) - Communicating Nutrition and Health		
GERO 515L - Food Production and Food Service Management		
GERO 567 - Prevention of Chronic Diseases through Nutrition, Physical Activity and Lifestyle Changes		
GERO 577 (2 units) - Food Service and Senior Living		
GERO 578 (2 units) - Revenue Management for Senior Living		
GERO 591 (2 units) - Field Practicum		
GERO 592 (2 units) - Multidisciplinary Research Seminar in Aging		
GERO 593 - Research Methods		

**MASTER OF ARTS IN GERONTOLOGY (MAG)
REQUIRED COURSES**

30 UNITS TOTAL	SEMESTER	GRADE
GERO 500 - Perspectives on a Changing Society: An Introduction to Aging		
GERO 508 - The Mind and Body Connection through the Lifespan		
GERO 520 - Life Span Developmental Psychology		
GERO 530 - Life Span Developmental Sociology		
GERO 540 - Social Policy and Aging		
GERO 581 (2 units) - Fundamental Skills in Gerontology		

ELECTIVE COURSES (choose 2)

Students must select two electives (for a total of 8 units) of Gerontology courses from the list below. Students may take a maximum of one GERO 400 level course from the list below. Students may also take GERO 499 or 599 in consultation with the academic adviser.

GERO 488 - Food, Culture, Disease and Longevity in Italy and in the Mediterranean		
GERO 489 - Finding the Key to a Long, Happy Life in Nicoya, Costa Rica		
GERO 493 - Longevity & Death among Ancient & Modern European Populations		
GERO 494 - Emotion-Cognition Interactions and Aging		
GERO 498 - Nutrition, Genes, Longevity and Diseases		
GERO 499 - Special Topics		
GERO 501 - Applied Legal and Regulatory Issues in Aging		
GERO 502 - Marketing and Shifts in Consumer Decision Making		
GERO 504 - Marketing and Shifts in Aging Services Management		
GERO 505 - Behavioral and Social Consequences of Design and Environment		
GERO 506 - Technological Innovations in Aging (Gerontechnology)		
GERO 507 - End of Life Care		
GERO 509 - Mindful Aging: Spirituality, Gratitude, and Resilience		
GERO 510 - Physiology of Development and Aging		
GERO 514 - The Art of Geriatric Symptom Management		
GERO 522 - Counseling Older Adults and Their Families		
GERO 541 - Health Care Delivery Models: Comparative Approaches		
GERO 550 - Administration and Systems Management in Programs for Older Adults		
GERO 551 - Applied Policy Skills in Aging		
GERO 552 - Human Resources and Aging		
GERO 554 - Evaluation: Incorporating Evidence-Based Practices		
GERO 561 - Introduction to Aging and Normal Changes with Aging		
GERO 562 - Diseases of Aging with Emphasis on Cardiovascular Diseases and Diabetes		
GERO 563 - Geropsychology		
GERO 564 - Multiple Chronic Conditions and Older Adults		
GERO 565 - Novel Technologies in Aging and Assisted Living		
GERO 566 - Cognitive Decline: Alzheimer's Disease and Dementia and Advances in Imaging		
GERO 567 - Prevention of Chronic Diseases through Nutrition, Physical Activity and Lifestyle Changes		
GERO 568 - Adaptive Age-Friendly Environments and Injury Prevention		
GERO 585 - The Aging Family		
GERO 589 - Case Studies in Leadership and Change Management		
GERO 593 - Research Methods		

MASTER OF SCIENCE IN GERONTOLOGY (MSG)**REQUIRED COURSES**

44 UNITS TOTAL	SEMESTER	GRADE
GERO 510 - Physiology of Development and Aging		
GERO 520 - Life Span Developmental Psychology		
GERO 530 - Life Span Developmental Sociology		
GERO 540 - Social Policy and Aging		
GERO 589 - Case Studies in Leadership and Change Management		
GERO 591 - Field Practicum (taken 2nd year)		
GERO 593 - Research Methods		
GERO 555 - Integrating Gerontology: A Multidisciplinary Approach (taken 2nd year)		

ELECTIVES (12 units)

Students may choose most GERO 500 level courses with some exceptions such as Nutrition and PhD courses.

Consult with the student advisor.

	SEMESTER	GRADE

ACCELERATED MASTER OF SCIENCE IN GERONTOLOGY (USC Leonard Davis undergrads only)**REQUIRED COURSES**

36 UNITS TOTAL	SEMESTER	GRADE
GERO 510 - Physiology of Development and Aging OR		
GERO 520 - Life Span Developmental Psychology OR		
GERO 530 - Life Span Developmental Sociology OR		
GERO 540 - Social Policy and Aging		
GERO 591 - Field Practicum		
GERO 591 - Field Practicum		
GERO 593 - Research Methods		
GERO 555 - Integrating Gerontology: A Multidisciplinary Approach		
Gerontology Elective (4 units)		

SKILL REQUIREMENTS (12 units)

	SEMESTER	GRADE

MASTER OF SCIENCE IN APPLIED TECHNOLOGY AND AGING (MSATA)

REQUIRED COURSES

32 UNITS TOTAL	SEMESTER	GRADE
GERO 500 - Perspectives on a Changing Society: An Introduction to Aging		
GERO 502 - Marketing and Shifts in Consumer Decision Making		
GERO 506 - Technological Innovations in Aging (Gerontechnology)		
GERO 565 - Novel Technologies in Aging and Assisted Living		
GERO 568 - Adaptive Age-Friendly Environments and Injury Prevention		
GERO 591 - Field Practicum		

ELECTIVE COURSE (8 units)

Students may take up to 8 units of Directed Research

GERO 501 - Applied Legal and Regulatory Issues in Aging		
GERO 510 - Physiology of Development and Aging		
GERO 554 - Evaluation: Incorporating Evidence-Based Practices		
GERO 563 - Geropsychology		
GERO 564 - Multiple Chronic Conditions and Older Adults		
GERO 566 - Cognitive Decline: Alzheimer's Disease and Dementia and Advances in Imaging		
GERO 589 - Case Studies in Leadership and Change Management		
GERO 590 - Directed Research		
GERO 590 - Directed Research		
GERO 592 (2 units) - Multidisciplinary Research Seminar in Aging		
GERO 593 - Research Methods		

MASTER OF SCIENCE IN NUTRITION, HEALTHSPAN AND LONGEVITY (MSNHL)

REQUIRED COURSES

44 UNITS TOTAL	SEMESTER	GRADE
GERO 498 - Nutrition, Genes, Longevity and Diseases		
GERO 511 - Fundamentals of Clinical Nutrition Screening and Assessment		
GERO 512 (2 units) - Communicating Nutrition and Health		
GERO 513 (2 units) - Fundamentals of Nutrition: Macronutrients		
GERO 515L - Food Production and Food Service Management		
GERO 517L - Advanced Therapeutic Nutrition		
GERO 518 - Current Topics in Clinical Nutrition		
GERO 560 - Macronutrients, Health, and Longevity		
GERO 590 (2 units) - Directed Research		
GERO 591 (2 units) - Field Practicum		
GERO 591 (2 units) - Field Practicum		
GERO 591 (2 units) - Field Practicum		
GERO 591 (2 units) - Field Practicum		
GERO 591 (2 units) - Field Practicum		
GERO 593 - Research Methods		

APPENDIX
MASTER OF SCIENCE IN NUTRITIONAL SCIENCE (MSNS)
REQUIRED COURSES

32 UNITS TOTAL	SEMESTER	GRADE
GERO 498 - Nutrition, Genes, Longevity and Diseases		
GERO 500 - Perspectives on a Changing Society: An Introduction to Aging		
GERO 518 - Current Topics in Clinical Nutrition		
GERO 560 - Macronutrients, Health, and Longevity		
GERO 564 - Multiple Chronic Conditions and Older Adults		
GERO 590 (2 units) - Directed Research		
GERO 590 (2 units) - Directed Research		
GERO 593 - Research Methods		

ELECTIVE COURSE (4 units minimum)

GERO 508 - The Mind and Body Connection through the Lifespan		
GERO 510 - Physiology of Development and Aging		
GERO 520 - Life Span Developmental Psychology		
GERO 522 - Counseling Older Adults and Their Families		
GERO 530 - Life Span Developmental Sociology		
GERO 540 - Social Policy and Aging		
GERO 541 - Health Care Delivery Models: Comparative Approaches		
GERO 550 - Administration and Systems Management in Programs for Older Adults		
GERO 554 - Evaluation: Incorporating Evidence-Based Practices		
GERO 561 - Introduction to Aging and Normal Changes with Aging		
GERO 562 - Diseases of Aging with Emphasis on Cardiovascular Diseases and Diabetes		
GERO 563 - Geropsychology		
GERO 567 - Prevention of Chronic Diseases through Nutrition, Physical Activity and Lifestyle Changes		
GERO 577 (2 units) - Food Service and Senior Living		
GERO 585 - The Aging Family		

MASTER OF SCIENCE IN LIFESPAN NUTRITION AND DIETETICS (MSLND)
REQUIRED COURSES

38 UNITS TOTAL	SEMESTER	GRADE
GERO 484 - Food History, Culture and Society OR		
GERO 498 - Nutrition, Genes, Longevity and Diseases		
GERO 511 - Fundamentals of Clinical Nutrition Screening and Assessment		
GERO 512 (2 units) - Communicating Nutrition and Health		
GERO 513 (2 units) - Fundamentals of Nutrition: Macronutrients		
GERO 515L - Food Production and Food Service Management		
GERO 517L - Advanced Therapeutic Nutrition		
GERO 560 - Macronutrients, Health, and Longevity		
GERO 590 (2 units) - Directed Research		
GERO 591 (2 units) - Field Practicum		
GERO 591 (2 units) - Field Practicum		
GERO 593 - Research Methods		
GERO 599 (4 units) - Special Topics		

DUAL DEGREE PROGRAMS

MASTER OF SCIENCE IN GERONTOLOGY / MASTER OF BUSINESS ADMINISTRATION

REQUIRED COURSES (GERONTOLOGY - 30 UNITS)

78 UNITS TOTAL	SEMESTER	GRADE
GERO 510 - Physiology of Development and Aging		
GERO 520 - Life Span Developmental Psychology		
GERO 530 - Life Span Developmental Sociology		
GERO 540 - Social Policy and Aging		
GERO 555 - Integrating Gerontology: A Multidisciplinary Approach		
GERO 591 - Field Practicum		
Gerontology Elective (6 elective units total)		
Gerontology Elective		

REQUIRED COURSES (BUSINESS - 48 UNITS)

MOR 548 - Competitive Advantage Through People		
MKT 512 - Marketing and Consumer Research		
MKT 525 - Consumer Behavior		
MKT 560 - Marketing Strategy and Policy		
Business Elective		
Business Elective		
Business Elective		
Business Elective		
Business Elective		
Business Elective		
Business Elective		
Business Elective		
Business Elective		
Business Elective		
Business Elective		
Business Elective		
Business Elective		
Business Elective		
Business Elective		

MASTER OF SCIENCE IN GERONTOLOGY / MASTER OF HEALTH ADMINISTRATION**REQUIRED COURSES (GERONTOLOGY 36 UNITS)**

78 UNITS TOTAL	SEMESTER	GRADE
GERO 510 - Physiology of Development and Aging		
GERO 520 - Life Span Developmental Psychology		
GERO 530 - Life Span Developmental Sociology		
GERO 540 - Social Policy and Aging		
GERO 550 - Administration and System Management in Programs for Older Adults		
GERO 555 - Integrating Gerontology: A Multidisciplinary Approach		
GERO 591 - Field Practicum		
GERO 591 - Field Practicum		
GERO 593 - Research Methods		

REQUIRED COURSES (POLICY, PLANNING, AND DEVELOPMENT - 42 UNITS)

PPD 506 - Introduction to Microeconomics: Applications in Health		
PPD 509 - Problems and Issues in the Health Field		
PPD 510a - Financial Management of Health Services		
PPD 512 - Health Administration Residency Seminar		
PPD 513 - Legal Issues in Health Care Delivery		
PPD 514 - Economic Concepts Applied to Health		
PPD 515 - Strategic Management of Health Orgs.		
PPD 516 - Financial Accounting for Health Care Organizations		
PPD 517 - Concepts and Practices in Managing Health Care Organizations		
PPD 518 - Quality of Care Concepts		
PPD 545 - Human Behavior in Public Organizations		
PPD 558 - Multivariate Statistical Analysis		
PPD 601 - Management of Long-Term Care Organizations		

MASTER OF SCIENCE IN GERONTOLOGY / JURIS DOCTORATE**REQUIRED COURSES (GERONTOLOGY - 36 UNITS)**

112 UNITS TOTAL	SEMESTER	GRADE
GERO 510 - Physiology of Development and Aging		
GERO 520 - Life Span Developmental Psychology		
GERO 530 - Life Span Developmental Sociology		
GERO 540 - Social Policy and Aging		
GERO 555 - Integrating Gerontology: A Multidisciplinary Approach		
GERO 591 - Field Practicum		
GERO 591 - Field Practicum		
GERO 593 - Research Methods		
Gerontology Elective		

REQUIRED COURSES (LAW - 76 UNITS)

LAW 502 - Procedure I		
LAW 503 - Contracts		
LAW 504 - Criminal Law		
LAW 505 - Legal Profession		
LAW 507 - Property		
LAW 508 - Constitutional Law I		
LAW 509 - Torts I		
LAW 512 - Law, Language and Ethics		
LAW 515 - Legal Research, Writing and Advocacy I		
LAW 516 - Legal Research, Writing and Advocacy II		
Law Elective		
Law Elective		
Law Elective		
Law Elective		
Law Elective		
Law Elective		
Law Elective		
Law Elective		
Law Elective		
Law Elective		
Law Elective		
Law Elective		
Law Elective		

MASTER OF SCIENCE IN GERONTOLOGY / DOCTOR OF PHARMACY

REQUIRED COURSES (GERONTOLOGY - 32 UNITS)

165 UNITS TOTAL	SEMESTER	GRADE
GERO 520 - Life Span Developmental Psychology		
GERO 530 - Life Span Developmental Sociology		
GERO 540 - Social Policy and Aging		
GERO 555 - Integrating Gerontology: An Interdisciplinary Approach		

ELECTIVES - 16 units

GERO 475 - Ethical Issues in Geriatric Health Care		
GERO 496 - Introduction to Clinical Geriatrics		
GERO 508 - The Mind and Body Connection through the Lifespan		
GERO 519 - Recent Advances in Neurobiology and Endocrinology of Aging		
GERO 522 - Counseling Older Adults and Their Families		
GERO 550 - Administration and System Management in Programs for Older Adults		
GERO 554 - Program Evaluation		
GERO 591 - Field Practicum		

REQUIRED COURSES (PHARMACY - 133 UNITS)

Year I (P1) Curriculum

Fall

PHRD 501 Pharmaceutics I Units: 3
 PHRD 502 Pharmaceutics II Units: 2
 PHRD 503 Biological Systems I Units: 4
 PHRD 511 Pharmacy Practice and Professionalism 1 Units: 5
 PHRD 515 Metabolism and Cell Biology Units: 2
 PHRD 521 Medicinal Chemistry Units: 2

Spring

PHRD 504 Biological Systems II Units: 4
 PHRD 512 Pharmacy Practice and Professionalism 2 Units: 2
 PHRD 514 Calculations and Compounding Units: 2
 PHRD 516 Non-Prescription Therapies Units: 3
 PHRD 520 Introduction to Therapeutics Units: 2
 PHRD 552 Pharmaceutics III Units: 3
 Pharmacy Practice IPPE (2 unit; CR/NC or IP)

Year II Curriculum

Required Gerontology course work

Year III (P2) Curriculum

Fall

PHRD 508 Pharmacy Literature Analysis and Drug Information Units: 3
 PHRD 559 Therapeutics: Pharmacokinetics Units: 3
 PHRD 563 Case Conference 1 Units: 2
 PHRD 572 Therapeutics: General Medicine Units: 5
 PHRD 625 Hospital Pharmacy Practice Units: 1
 Pharmacy Practice IPPE (2 unit; CR/NC or IP)
 Electives: 1-3 units*

Spring

PHRD 517 Pharmacogenetics Units: 2
 PHRD 564 Case Conference 2 Units: 2
 PHRD 570 Therapeutics: Central Nervous System Units: 5
 PHRD 603 Therapeutics: Endocrine System Units: 5
 PHRD 624 Community Pharmacy Practice Units: 2
 PHRD 634 Scholarly Project 1 Units: 1
 Pharmacy Practice IPPE (2 unit; CR/NC or IP)
 Electives: 1-3 units*

Year IV (P3) Curriculum

Fall

PHRD 611 Therapeutics: Infectious Diseases Units: 5
 PHRD 619 Therapeutics: Cardiovascular System Units: 5

PHRD 622 Case Conference 3 Units: 2
PHRD 633 Pharmacy Management and Economics
Units: 2
PHRD 635 Scholarly Project 2 Units: 1
Pharmacy Practice IPPE (0 unit; CR/NC or IP)
Electives: 1-3 units*

Spring

PHRD 567 Pharmacy Law Units: 2
PHRD 608 Therapeutics: Oncology and Immune
Disorders Units: 5
PHRD 623 Case Conference 4 Units: 1
PHRD 636 Scholarly Project 3 Units: 1
PHRD 650 APPE Gateway Units: 2
Pharmacy Practice IPPE (0 unit; CR/NC or IP)
Electives: 1-3 units*
APPE Course (Optional): 6 units

Required Introductory Pharmacy Practice Experiences (IPPE) Courses

Students will be required to register for the following IPPE course sequences as indicated in the schedule above. Students will need to register for the second course of each sequence until they have completed the 80 hours of IPPE associated with the first course of each sequence. Students will be given a grade of Credit (CR) in the first course of each sequence once the 80 IPPE hours have been successfully completed.

PHRD 627a Longitudinal Elective Pharmacy Practice
Units: 2
PHRD 627b Longitudinal Elective Pharmacy Practice
Units: 0
PHRD 629a Longitudinal Community Pharmacy Prac
tice Units: 2
PHRD 629b Longitudinal Community Pharmacy Prac
tice Units: 0
PHRD 631a Longitudinal Institutional Pharmacy Prac
tice Units: 1, 2, 3
PHRD 631b Longitudinal Institutional Pharmacy Prac
tice Units: 0

Note:

*Elective courses: Students MUST complete a mini-
mum of 3 units of elective courses for the degree.
Students will be provided a list of courses approved
each year.

**APPE courses are described below. Students may
begin their APPEs in late March or early April of their
P3 year and may be assigned to any of APPEs listed
below.

Advanced Pharmacy Practice Experience (APPE)

Students must enroll in a minimum of six 6-unit six-
week APPEs for a total of 36 units. Some students will
take their APPEs entirely in their P4 year. Some will
take one 6-unit APPE starting in the spring of their P3
year (late March/early April). Students will return to
campus the last six weeks of their P4 year.

Required APPE Courses

Students must complete all APPE courses below (24
units) and the Doctor of Pharmacy Capstone courses
(0 units).

PHRD 701 Acute Care Clinical APPE Units: 6
PHRD 704 Primary Care APPE Units: 6
PHRD 705 Community Pharmacy APPE Units: 6
PHRD 718 Hospital Pharmacy Practice APPE Units: 6
PHRD 796a Doctor of Pharmacy Capstone Units: 0
PHRD 796b Doctor of Pharmacy Capstone Units: 0, 3

Elective APPE Course

Students must complete 12 units from the list below.

PHRD 714 Nuclear Pharmacy APPE Units: 6
PHRD 725 International Pharmacy Practice Experi
ence Units: 3, 6
PHRD 731 Advanced Geriatrics APPE Units: 6
PHRD 738 Pharmaceutical Industry APPE Units: 6
PHRD 750 Advanced Pharmacy Practice Elective
(APPE) Units: 6
PHRD 751 Non-traditional Advanced Pharmacy Elec
tive (APPE) Units: 6

MASTER OF SCIENCE IN GERONTOLOGY / MASTER OF PUBLIC ADMINISTRATION**REQUIRED COURSES (GERONTOLOGY - 40 UNITS)**

68 UNITS TOTAL	SEMES- TER	GRADE
GERO 510 - Physiology of Development and Aging		
GERO 520 - Life Span Developmental Psychology		
GERO 530 - Life Span Developmental Sociology		
GERO 540 - Social Policy and Aging		
GERO 550 - Administration and System Management in Programs for Older Adults		
GERO 555 - Integrating Gerontology: A Multidisciplinary Approach		
GERO 591 - Field Practicum		
GERO 591 - Field Practicum		
GERO 593 - Research Methods		
Gerontology Elective		

REQUIRED COURSES (POLICY, PLANNING, AND DEVELOPMENT - 28 UNITS)

PPD 503 - Economics for Public Policy		
PPD 504 - Essential Statistics for Public Management		
PPD 540 - Public Administration & Society		
PPD 545 - Human Behavior in Public Organizations		
PPD 546 - Professional Practice of Public Administration		
PPDE 505 - Professional workshop in Public Administration		
PPD 541 - Public Financial Management and Budgeting OR		
PPDE 645 - Financial Management of Noprofit Organizations		
Elective (4 units)		

APPENDIX**MASTER OF SCIENCE IN GERONTOLOGY / MASTER OF SOCIAL WORK****REQUIRED COURSES (GERONTOLOGY - 32 UNITS)**

73 UNITS TOTAL	SEMESTER	GRADE
GERO 506 - Technological Innovations in Aging (Gerontechnology)		
GERO 508 - The Mind and Body Connection through the Lifespan OR		
GERO 510 - Physiology of Development and Aging		
GERO 520 - Life Span Developmental Psychology		
GERO 530 - Life Span Developmental Sociology		
GERO 540 - Social Policy and Aging		
Gerontology Elective		
Gerontology Elective		
Gerontology Elective		

REQUIRED COURSES (SOCIAL WORK - 41 UNITS)

SOWK 506: Human Behavior and the Social Environment		
SOWK 510: Professional Self-Care in Integrative Social Work Practice		
SOWK 511: Critical Decision Making in Integrative Social Work Practice		
SOWK 523: Foundations of Integrative Social Work Practice I		
SOWK 525: Foundations of Integrative Social Work Practice II		
SOWK 536: Policy and Advocacy in Professional Social Work		
SOWK 546: Science of Social Work		
SOWK 591: Applied Learning in Practicum Education I		
SOWK 593: Applied Learning in Practicum Education II		
SOWK 630: Diversity, Social Issues, and Culturally Competent Social Work Practice		
SOWK 691: Applied Learning in Practicum Education III		
SOWK 693: Applied Learning in Practicum Education IV		

SOCIAL WORK CONCENTRATION (CHOOSE ONE SET)**ADULT MENTAL HEALTH AND WELLNESS**

SOWK 612: Assessment and Diagnosis of Mental Disorder		
SOWK 643: Social Work Practice in Integrated Care Settings		
SOWK 647: Advanced Practice with Complex Social Work Cases		

SOCIAL CHANGE AND INNOVATION

SOWK 639: Policy Advocacy and Social Change		
SOWK 648: Management and Organizational Development		
SOWK 665: Grant Writing and Program Development		

MILITARY

SOWK 599: Clinical Practice and Policy with Service Members and their Families		
SOWK 633: Life in the US Military: Foundations of Practice in Military Social Work		
SOWK 608: Research and Evaluation in Integrative Social Work Practice OR		
SOWK 612: Assessment and Diagnosis of Mental Disorder OR		
SOWK 627: Practice and Policy with Children and Families Across Settings OR		
SOWK 665: Grant Writing and Program Development		